

WHEATLEY NEWS

Published by Wheatley Parish Council



Sunrise From St. Mary's Close | Julie Mobbs

Parish Council AGM - Page 6
Be a Youth Worker - Page 17
Great Big Green Week - Page 69



Contributions

The Wheatley Newsletter welcomes contributions and adverts from everyone in the two parishes and from businesses and organisations serving Wheatley and District. News and reports from village organisations are particularly welcome but contentious issues or articles promoting personal causes should be avoided. Submissions should be made by **16th May** for the next issue.

The Editor reserves the right not to print items and to edit items submitted for publication.

Head to bit.ly/wnl-info for further details and to download a booking form.

Meetings & Dates

Full Parish Council

Merry Bells, 19:30

8th April

13th May

Planning Cmte.

Parish Office, 19:30

10th April

8th May

Finance Cmte.

Parish Office, 19:30

15th April

Open Spaces Cmte.

Parish Office, 19:30

May TBC

Parish Surgery

Parish Office

09:30 - 11:30

Every Wed & Sat

District Cllr Surgery

Parish Office 10:30

2nd Saturday in each month

WHEATLEY NEWS

Publisher & Billing Enquiries

Wheatley Parish Council
The Parish Office
The Merry Bells
89 High Street
Wheatley, OX33 1XP
01865 875615
clerk@wheatleyparishcouncil.gov.uk
www.wheatleyparishcouncil.gov.uk

Editor & Artwork/Content Enquiries

Pete Collinson
newsletter@wheatleyparishcouncil.gov.uk

Distributor

This newsletter is kindly distributed to all addresses in Wheatley and Holton by a team of volunteers, organised by the Parish Office.

Disclaimer

The views expressed in the Newsletter are not necessarily those of the Parish Council or the Editor, and no liability can be accepted for any errors or omissions, although we will publish corrections where necessary.

Happy Easter!

Spring is well on its way now, and signs of life in gardens are lovely to see.

On 9th March councillors convened at the URC to participate in our spring development day. We hold two development days a year to meet informally over coffee and a simple lunch to discuss the issues facing our village. Taking time out allows us to really get into the detail and air our views and concerns together.

At this session we looked at the progress of the Brookes site, permissive footpath at Littleworth, the development on Miss Tombs Field, potential of the cadet hut (we still haven't been offered a lease), working with Wheatley Primary School on progress to release Littleworth Field to the village and the pavilion on Holton Playing Fields. We continue to have very good discussions and engagement with both Crest Nicholson and Lagan Homes to ensure the village benefits from the ongoing developments.

We also talked about upcoming events – Produce Market on 20th April, Annual Parish Meeting on 22nd April, and the Play and Activity Day in July.

One of the highlights of the day was a visit by the local police sergeant, who talked to us about the policing priorities for Wheatley and Chalgrove Neighbourhood. We talked through the crime statistics for Wheatley, and you will be reassured to know we live in one of the safest areas of the country. Most of the crime in our area happens at Junction 8 Oxford Services. If you happen to visit, please be vigilant and take your valuables with you.

Being a councillor is extremely rewarding, albeit challenging, and we looked at communication with villagers using various channels to reach as many people as we can to update on our projects. Alongside that we looked at potential problems to becoming a councillor – either time, caring responsibilities, or commitment. Life is so busy for all of us and fitting everything in can be very difficult. If you want to know more and understand how you can contribute to the village, contact me or the Clerk for more information or an informal chat.

Finally, have a very Happy Easter and enjoy the mini break – summer's not far away now.

Alison Sercombe

Clerk's Column

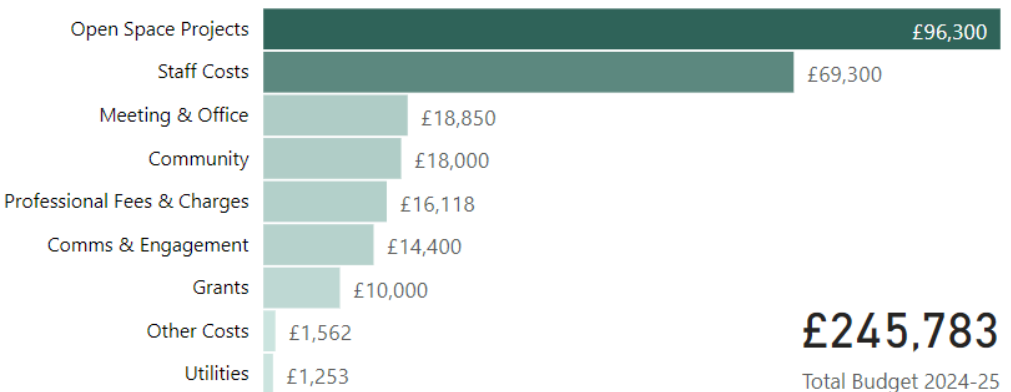
What a damp start to the year we have all had, but lovely to see the signs of spring and sunnier times ahead – we hope!

Spring brings us closer to the end of the financial year and heading towards the end of another council year. These months provide us with opportunities to review and reflect on our achievements, our work, and the impact we have had in the community. As part of this the whole community is invited to the Annual Parish Meeting, being held on Monday 22nd April, at 7pm in the Merry Bells. This isn't a 'parish council' meeting, but more of a parish forum where there will be some brief updates, opportunities for you to raise questions, queries, and concerns, then hear about the role you can play in combating climate change through recycling and reducing your waste, with a talk by SODC/Biffa Waste & Recycling team.

It is almost twelve months since the 2023 elections, the work of the council continues, but more hands would help in us deliver projects, which will benefit the whole community or core groups. We still have opportunities for four parish councillors, to join, to use their voice to make sure the community is represented and to make a real, positive impact to their village. Councillors and staff are there to support anyone that is interested, and we are all happy to have an informal chat about the role and the council's work.

As a councillor, you have a role to play in helping set our budgets and the precept, we levy on each household. In 2023, council decided to increase the precept by 7.5%, which equates to an annual increase of £5.49, or a takeaway coffee and cake. How we plan to spend this is detailed below, and if you would like more information, please contact us, or visit our website.

Expenditure Budget 2024-25



Now, what are your plans on **20th April**? We hope you will be coming along and supporting our Local Produce Market, offering lots of local produce, gifts, and hot and cold

refreshments and food. A great way to support local businesses, reduce food miles and meet your friends and neighbours.

Finally, I would like to thank everyone who turned out for the annual village litter pick. There were some familiar faces from the village litter crew, but some new faces too. We really appreciate you taking the time to help.

I would also like to say thank you to everyone who has praised our grounds team on their recent efforts to clear the footpaths of overgrowing grass and weeds. The team really appreciated the positive comments they received.

Michelle Legg

FREE THINGS TO DO THIS

Visit the recreation grounds at Church Rd, Farm Close Rd, Cullum Rd

Wheatley Heritage Trail Walk- 2 to choose from. Maps and starting point at The Merry Bells, visit: www.facebook.com/wheatleyvillagearchive

Visit the **Community Larder**, Thursdays 2.30-3.30pm, URC High Street. Food is free to take to help reduce food waste.

Visit Wheatley Library and, arts & crafts also available, visit <https://www.facebook.com/FriendsofWheatleyLibraryOxfordshire>

Go on a Mini Beast Hunt at The Howe, access via Howe Close/ Windmill Lane & also see what's growing on the allotments.

Visit Wheatley Archives (in Wheatley Library) to discover more about Wheatley, family trees and much more. For more information and to book an appointment visit: www.facebook.com/wheatleyvillagearchive

Explore Littleworth Nature Reserve and spot deer, butterflies, flowers and much more. Access via Littleworth or Old Rd, for more information visit: www.facebook.com/groups/688481592038211

Take a picnic to Shotover County Park, climb trees, go orienteering, or play in the natural sandpit visit www.oxford.gov.uk/directory-record/668/shotover-country-park

Check out You Move Oxfordshire www.getoxfordshireactive.org/you-move or **Active Communities South & Vale** www.southandvale.gov.uk/south-and-vale-holiday-activities for other low cost, local activities



WHEATLEY PARISH COUNCIL

**ANNUAL PARISH MEETING &
PRESENTATION BY SODC'S
WASTE & RECYCLING TEAM**



Annual Parish Meeting 2024

Monday 22nd April 2024 from 7pm
in the main hall of the Merry Bells

Everyone is welcome! Come along, hear updates from your local councillors, updates on housing development, ask your burning questions and enjoy an informative presentation from

SODC's Waste & Recycling Team



Can't make it, don't panic! Watch the meeting online. Scan the QR code or contact for parish office for the link.

Wheatley Parish 89 High Street, Wheatley, OX33 1XP
T: 01865 875615 E: clerk@wheatleyparishcouncil.gov.uk
W: www.wheatleyparishcouncil.gov.uk



13th
July
11-3

WHEATLEY & HOLTON
**PLAY &
ACTIVITY DAY**

WHEATLEY PLAYING FIELDS, OX33 1QG



FREE ENTRY & ACTIVITIES:

Go Karts, + Tricky Trails Biking + Body Zorbing + Drumming + Junk Modelling with Art Avalanche + Toddler Ride on Vehicles + Bright Sparks Science + Fire Play + DIY Face Painting + Giant Bubbles + Eart Trust + Smoothie Bike + Maple Tree Centre + Fabric Upcycling + Sports Taster + Arts & Crafts + so much more

No childcare is provided at this event and photogrpahs will be taken. Disabled parking on site, limited parking available opposite the site.

Contact: Martin.gillett@oxonplay.org.uk www.oxonplay.org.uk
07436 270267

Grant & Stone





Mallams
1788

Thinking of selling your Jewellery?

Free confidential valuations on any piece(s) you are considering selling at auction.

Home visits also available

Enquiries: 01865 241 358
or oxford@mallams.co.uk
www.mallams.co.uk

Introductory Courses in **Practical Philosophy** *for a better life*

Ten weekly sessions lasting approximately 2¼ hours, including refreshments starting at:

Waterperry Gardens:

Sat 4th May 2024, 10am to 12:15pm

King's College, Oxford:

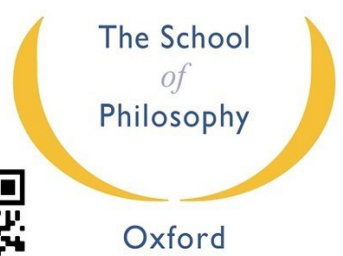
Monday 29th Apr 2024, 7:00-9:15PM

Aylesbury Multicultural Centre

Wednesday 1st May, 7:00-9:15PM

www.schoolofphilosophyoxford.org 07856 197881

Registered charity numbers 313115 and SC039950





CYBERSIGNS OXFORD



SPRING OFFER 20% DISCOUNT

**SOLAR WINDOW TINTING
PAINTING & DECORATING
WALLPAPER**

SHOP SIGNAGE

VEHICLE GRAPHICS

WINDOW GRAPHICS

SOLAR WINDOW TINTING

PAINTING & DECORATING

WALLPAPER

CORPORATE WORKWEAR

email: lee@cybersigns.co.uk

**01865 590784
07813 966648**

13 Wheatley Business Centre,
Old London Road, Wheatley OX33 1XW

- *Business Stationery*
- *Leaflets*
- *Newsletters*
- *Books*
 - *Reports & Manuals*
 - *Cards & Calendars*
 - *Photocopying*
 - *Digital Printing*
 - *Exhibition Stands*
 - *Posters*

PARCHMENTS PRINT of OXFORD

H4/H5 Kingston Business Park, Kingston Bagpuize, Oxon. OX13 5FB

01865 747547

print@parchmentuk.com

www.parchmentuk.com

- *Pop Up Banners*
- *Outdoor Banners*
 - *Fabric Printing*
 - *Vehicle Graphics*
 - *Vehicle Magnetic Signs*
 - *Vehicle Full / Half Wrap*
 - *and much more...*

THINKING OF



computer problems ?

Est. for over 15 years

call THE WINDOWS CLEANERS

HOME AND SMALL BUSINESS COMPUTER SUPPORT

system upgrades
virus removals
performance improvements
wireless networks
internet solutions
and more

for a speedy,
jargon-free appointment:

07947 700746
01844 698432

Computer Tuition for Older People

Are you confident with your computer
or do you just about get by?

I offer one-to-one tuition in basic computer skills (email, internet, scanning, Word, Excel etc.). I can also help with tablets (e.g. iPad), Family Research (e.g. Ancestry) and more advanced Office skills.

I am a sympathetic teacher with endless patience and wide experience in working with older people (DBS checked).

No minimum commitment.
FREE ½ hour consultation offered
with no obligation

Phone Peter on 01865 876848
email: computer.help.oxford@gmail.com

CHARLES WOOD & SONS

International Removals & Storage

- House Removals
- Container Storage
- Self Storage
- Archive Storage
- Office Relocations
- Professional Packing Service
- Packing Materials

Call us today for a free,
no obligation quotation

01865 747555

www.charles-wood.co.uk



PIANO & MUSIC THEORY TUITION

Music graduate of Oxford University with 15 years teaching experience at all ages and abilities
Beginners to advanced pupils welcome

- First try-out lesson £10 with no obligation
- Fellow of the Incorporated Society of Musicians
- Enhanced DBS available for inspection upon request
- Fee: £21 per half hour
- Based in Littlemore



Robin Hagues MA(Oxon)

T: 07930-941545 E: robin@robinhagues.co.uk

Art for Life

Let Your Creativity Come Alive!



FOR COMPLETE BEGINNERS TO CONFIDENT ARTISTS

Fancy learning something new or developing your artistic skills? Then why not join our lovely group in Horspath for one of our all abilities art classes! You'll be made very welcome, no matter how much or how little prior experience you've had. Take a look at our website for more information or get in touch!



Book via our website : www.oxford.artforlife.uk

✉ email : artforlifeoxford@gmail.com

Call Heather : 01865 408149



Serving your home needs since 1973

Whether you are looking to SELL, BUY, LET or are just after advice, WHEATLEY ESTATES are on hand to offer any support you may need.

01865 872073

mail@wheatleyestates.co.uk

wheatleyestates.co.uk



@WheatleyEstates

A member of OnTheMarket.com

rightmove.co.uk

STORAGE

- Archive and Documents
- General Household
- Car
- Boat
- Caravan
- Business
- Short or long term

HOLLANDS FARM GREAT MILTON

jonnie@hollandsfarm.com

07768 408389

Protect your loved ones future...

Made your Will or Lasting Power of Attorney yet?

Don't delay, we can visit you in the privacy and comfort of your own home to make your Will and Lasting Power of Attorney at your convenience.

Our Services

Wills | Probate & Trustee Service
Estate Planning | Deeds of Variation
Lasting Power of Attorney | Trusts
Tenancy Severance

01844 213470
0345 057 3499
info@allguardservices.co.uk



Don't waste anymore time.

Get in touch with us today!



"A very pleasant experience. Respectful and considerate. Listened to my requirements and provided clear responses. I highly recommend Nick." Mr Grant

Family Law and probate disputes
- initial meeting £150 +VAT
Wills - £350 +VAT all-inclusive service

Your local family lawyer

Community | Empathy | Competence | Trust | Integrity

Unit 3 Wheatley Business Centre,
Old London Road, Wheatley OX33 1XW
nick@twfamilylaw.co.uk | www.twfamilylaw.co.uk

07432 767426

WILSONS solicitors

52 High St, Wheatley, Oxford, OX33 1XT
Tel:01865 874497 Fax: 01865 873793
Email: wilsonsolicitor@btconnect.com

MATRIMONIAL
CONVEYANCING
COMMERCIAL PROPERTY, EDUCATION, DRIVING OFFENCES
LANDLORD AND TENANT
GENERAL CIVIL LITIGATION,
EMPLOYMENT (compromise agreement)
WILLS AND PROBATE, LASTING POWERS OF ATTORNEY

A franchised firm for public funding in:
FAMILY LAW, CHILDREN'S LAW AND CRIME

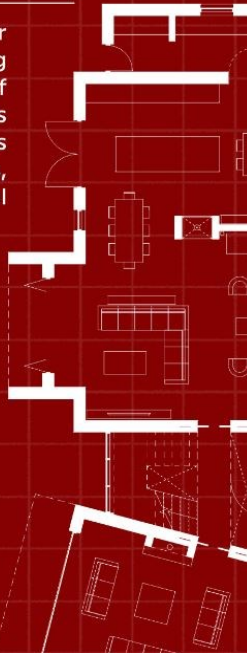


ENZA Architects [En-za] Zulu origin, verb. Meaning create, do, make

We are a Wheatley-based architectural practice with a passion for creating innovative and functional spaces, specialising in serving diverse construction sectors. We bring over 20 years of experience, having successfully delivered projects of various scales, from small residential developments to large-scale ventures encompassing listed buildings, extensions, alterations, new builds, conversions, commercial establishments, leisure facilities, rural landscapes, and more.

Our Services:

- ⊕ Feasibility
- ⊕ Sketch Design
- ⊕ Planning Applications
- ⊕ Building Regulations
- ⊕ Technical
- ⊕ Tender
- ⊕ On Site Support



info@enzaarchitects.co.uk
+44 7880 511602
www.enzaarchitects.co.uk

Member of the
arb Architects
Registration
Board

A complete accountancy & taxation service



Extensive experience in handling the accounting and taxation affairs of:

- Limited companies
- Partnerships
- Sole traders
- Landlords

A full bespoke service is guaranteed to all our clients.

To find out more please contact us, Laura Netherton or Valerie Carroll, for more information

Carter & Carroll Limited
 Rectory Mews, Crown Road
 Wheatley, Oxfordshire OX33 1UL
 Tel: 01865 876443

Email: enquiries@carterandcarroll.co.uk
www.carterandcarroll.co.uk



Services include:

- Annual accounts
- Xero - set-up & assistance
- Taxation
- Payroll services
- VAT returns
- Making tax digital Implementation
- Home visits available
- Free Initial consultations



carter&carroll
 Chartered Certified Accountants



Music, Inspiration & Creativity in Wheatley



OCO organised a very successful song writing competition in November 2023. The intention was to stimulate and encourage musical activity in Wheatley and was open to all residents. The response was impressive with over 20 entrants in all categories, Charlotte (aged 10) wrote to tell us of her experience.....

“The Song Writing Competition with Mr Simmonds

In 2023, Mr Simmonds came into Wheatley Primary School to help and encourage children to write songs. At first, only a few people were interested but as they enjoyed it immensely, others thought to give it a go. They kept working on the songs until they were as amazing as they could be. Then, on Saturday 18th November, they performed the songs in front of a vast audience (who were all very impressed). There were also categories for secondary school children and adults, whose music was hugely creative.

Congratulations to all the winners, and everyone who took part or helped out! Thank you, Mr Simmonds, for inspiring us!”

OCO has enlisted the talents of Gez Foster, one of the UK’s leading writers of childrens’ TV programmes together with comedy and drama for grown-ups. Gez, a Wheatley resident, has written a script using many of the songs from the competition. The resultant musical production will be performed at St Mary’s Church once the refurbishment has been completed. Auditions will take place in June, details will be available on the OCO website (www.oxcontemporaryopera.org) or by contacting me on:

roy@oxcontemporaryopera.org.

Roy Gordon

Littleworth Nature Reserve

Contribution to flood alleviation in Wheatley

Following consultation with local stakeholders, contractors will start work at the end of March to install leaky dams in Littleworth Nature Reserve. The dams will be created by hinging (partially felling) some the over-hanging willows, supplemented by the installation of smaller pile dams, with the aim of holding back peak water flows which currently flood neighbouring gardens and Littleworth allotments. The work will also increase the diversity of wildlife habitats in the reserve. It may look quite brutal at first, but we are confident that the reserve will quickly recover. Please look out for a call for volunteers to harvest willow withies and share local knowledge with the contractors.

Geoff Stephens | Littleworth Nature Reserve

Recruiting – Play Workers / Youth Workers

The Oxfordshire Play Association (OPA), working in partnership with Wheatley Parish Council, has secured funding to deliver a weekly Junior Youth Club in Wheatley.

The project is designed for Children and Young People in School Years 6, 7 and 8 (Ages 10 to 13) and will look to support them through the transition from Primary School to Secondary School. The project will be delivered at the Merry Bells in Wheatley on an evening TBC from 6pm to 8pm.

The role will involve:

- Planning and delivering weekly, two hour sessions offering a range of varied, engaging and Playful activities.
- Creating a setting and environment that promotes Play, Physical Activity, Healthy Lifestyles and Positive Behaviours
- Working in partnership with Wheatley Parish Council and other Community and local Partner Organisations to ensure that we are meeting the needs of the local Community.
- Promoting other services and activities available locally to those accessing the sessions.

Our new Playworkers will work **5 hours per week** (2 hours prep, 2 hours direct delivery and 1 hour monitoring and reporting) at an hourly rate of **£12.68 per hour (£14.21 per hour** including Holiday Pay)

As this job involves working with Children and Young People it will be subject to an **enhanced DBS / CRB check**, satisfactory receipt of two references and completion of relevant Safeguarding Children and Young People Training.

We are unable to accept CV's for the role, to request an application form please contact: Martin Gillett, OPA Manager:

T = 07436 270267 or E = martin.gillett@oxonplay.org.uk



ROYAL BRITISH LEGION WHEATLEY BRANCH

Household Cavalry Band Concert in Aylesbury

Members might be interested in the following concert at the Waterside Theatre

Next Branch Meeting Thursday 18th April 2024 in the New Club (from 11.30am)

The speaker will be Martin Alexander, retired Professor of History from Aberystwyth University. He will give a talk on an US pilot shot down and captured during the Vietnam war. **Please remember to bring a raffle prize.**

New Branch Committee

Members who attended the AGM in November will remember that we were unable to elect a replacement for Mr David Simms, who was standing down as Chairman at the end of the year. This would have meant a change of status to. "County Supported Branch". However, to avoid this, at the last Committee meeting it was decided that Gareth Morris would become the Chairman and Jim Watson would remain as Secretary pro tem.

Gareth Morris | Branch Chairman



An Unforgettable Day Out Wednesday 12th June

Coach trip to the National Memorial Arboretum

£25 per head

For more details, ring Laurence on 01865 872899

Then and Now - 50 years of change in Wheatley

Come along to an exhibition which tracks the changes in Wheatley since 1974.

To celebrate the **Wheatley Society's 50th anniversary** we have teamed up with other organisations and individuals to create this exhibition which will be held at The Merry Bells on **Saturday May 18th, 2024, from 10am until 4.30pm.**

Wheatley is very fortunate to be able to show the changes during this period on a 'then and now' basis due to the extensive collection of maps and photographs plus anecdotal records from villagers that are available. For many it will bring back memories; for others they may be surprised at how the village once looked, what people wore, and how many shops there were. Not only will physical changes to the village be presented but the many celebrations, village parties and musical and theatrical events will also be displayed.

Looking to the future there will be information on some current proposals for the village.

To add further interest, we are inviting attendees to forecast the changes they think will occur in the village over the next 15 years or so. The most interesting will be published and a prize awarded. Children can choose to try to find as many hidden symbols as they can in the exhibition with prizes for those who find the most.

The intention is to have something of interest for everyone, young or old, long-established residents and newcomers alike.

Entry is free. Tea, coffee, cakes, and biscuits will be provided for a small donation. We look forward to seeing you.

SAVE THE DATE – 13 July 2024 for Wheatley & Holton Play & Activity Day at playing fields opposite Wheatley Park School

Celebrating play and our community!





Wheatley Scout Group is celebrating - we are 60 years old!

Have you ever been involved in Wheatley Scouts, as a youth member, a Leader, on the Exec committee or have just supported the group in any way? We would like you to get in touch with us to help us celebrate our 60th Birthday this year.

We are looking for memories and photographs - do you have some you could share?

Also, we would like to invite you along to our celebration weekend in July.

So please get in touch - nathalie.soanes@gmail.com

We look forward to hearing from you.

 CELEBRATING ceramics	 Jewellery & Silversmithing Fair				
		 			
<h1>19 – 21 July</h1> <p><i>Two Events • One Admission • One Fabulous Venue • Over 200 Exhibitors</i> HELD ON ADJACENT LAWN</p>					
<h2>Waterperry Gardens</h2> <p>near Wheatley, Oxford OX33 1LA</p>					
	<p>Surrender This Advert For Free Admission For Two People Friday to Saturday: 9.30am-5.30pm • Sunday: 9.30am-5pm</p>				 Waterperry Gardens
www.celebratingceramics.co.uk			www.desirefair.com		

APRIL

Tuesday 2nd: Meet at Warborough church for a leisurely 7 mile walk via Berrick Salome.

Thursday 4th: Meet at Bradenham for an undulating 7 mile walk via West Wycombe.

Tuesday 9th: Gentle, social 2½ mile walk from Chinnor High Street. Refreshments available at the Village Centre at the end of the walk.

Thursday 11th: Meet at Nuffield church car park for a 7½ mile walk hopefully with plenty of bluebells.

Saturday 13th: Meet at the Stanton St. John Village Hall car park for a 7 mile walk through villages and fields.

Monday 15th: Meet at Bradenham NT car park, Smalldean Lane, for a 5 mile walk.

Thursday 18th: Meet at Bledlow for a 9 mile circular walk in the Chilterns. Bring a picnic.

Thursday 25th: Meet at Holton lay-by junction A40 and B4027 for a 5½ mile walk via Forest Hill, skirting Stanton Great Wood and through Holton Wood.

Saturday 27th: Meet at Wheatley car park off Church Road for an 8 mile walk up and down ridges and valleys. Bring a picnic.

MAY

Thursday 2nd: Meet at the church, Cholsey, for an undulating 8½ mile walk with good views.

Thursday 9th: Meet at Fingest for a 7½ mile undulating walk via Little Frieth and Turville.

Sunday 12th: Meet in Stokenchurch for a 6½ mile walk through the Wormsley estate and Ibstone.

Tuesday 14th: Meet at Haddenham Garden Centre for a leisurely, gentle, social 2½ mile walk around the new and old of Haddenham. Café options enroute and at the end.

Tuesday 21st: Meet at the Studley Green Garden Centre for a 5½ mile walk up and around Radnage.

Sunday 26th: Meet at Wendover (car park behind library) for a leisurely stile-free 6½ mile walk passing the highest point in the Chilterns. Joint walk with the Chiltern Conservation Board.

Tuesday 28th 6pm: Meet at Wheatley car park off Church Road for a railway themed 5 mile walk. Possible pub stop at end of walk. **Note start time!**

All walks are circular and start at **10am unless otherwise stated.**

Please check the website to find additions to the programme and to confirm walks details as they are subject to change:

www.ramblers-oxon.org.uk/thame-wheatley/walking.html

or phone 01844 213608

Leaders' contact details and suitability of walks for dogs can also be found on the website.

It was a bitterly cold evening but nevertheless a good number of our members turned out to hear a talk and demonstration by Trudi Hill who runs "About Face" hair and beauty salon in Wheatley.

Trudy told us the best way to care for our hair and skin and then spent some time answering questions put by members. We were then given a demonstration of a CACI facial. This is a non-surgical face lift which lifts all areas of the face therefore reducing wrinkles. A member had volunteered to have this done and said how relaxing the experience was and everyone agreed that you could see a difference. The technique was originally developed for the medical field for the treatment of ailments such as Bell's Palsy, but it was soon realised how this could be used for a beauty treatment and is now widely available.

In February we welcomed three staff members of the newly built Wellford Gardens care home. They talked us through the planning and development of this luxurious home which will offer residential care including dementia and respite care. Member's questions were answered, and reassurances given to any concerns raised.

This was then followed by our starter evening which consisted of two tables laden with delicious starters and canapes for us to try. Recipes were swapped and hopefully some impressive entertaining will be forthcoming.

We are holding a fashion show on Friday 10th May at 7.30pm in the Merry Bells.

Tickets are £7 available from Country Collections and Wheatley Estates also via the WI email:

wheatleywi@oxfordshirewi.co.uk

Please come and support us and top up your wardrobe at the same time.

Our meeting on April 16th is Organic Farming when our speakers will be Cate and Charles Bennett from Sandy Lane Farm. The theme of our May meeting will be The Great Big Green Week – Making Bird Feeders.

Visitors are always welcome at our meetings which are held in The Merry Bells on the third Tuesday of each month beginning at 7.15 pm. A donation of £4 is suggested.

HISTORY SNIPPETS 1924

The main event during April and May 1924 was the grand exhibition held in Oxford. Wheatley W.I. were entering many of the classes and also serving refreshments. Our W.I. appeared to have gained quite a number of certificates which were presented at the May meeting. The summer outing this year will be to the Wembley Exhibition. The monthly meetings had lectures on various subjects from making raffia flowers to sweet making and piano recitals. At one meeting a collection of eggs was made for Wingfield Hospital with 197 eggs being received. However, there was probably a sigh of relief when it was decided not to hold a course of lectures on poultry keeping suggested by one member.

Stephanie Brooklyn



Happy Spring from The Maple Tree!

Have you visited our lovely Children's Centre recently? All sessions are drop-in, except our popular Maple Chefs, which is bookable via Eventbrite.

Mondays: Messy Monday at 10:00-11:30am and Twinnies at 2:00-4:00pm

Tuesdays: Once Upon a Rhyme-Time at 10:00-11:30am

Wednesdays: Little Explorers at 10:00-11:30am and Maple Chefs at 1:00-3:00pm (Spaces are limited, so book in advance – bit.ly/mapletreeeb)

Thursdays: Baby and Bump Cafe at 9:30-11:30am and The Maple Tree at Forest Hill Village Hall at 11:00am-12:00pm.

Fridays: Little Chatterboxes at 10:00-11:30am

Family Fun at 10:00-11:30am, **3rd Saturday every month**

Check out our Website and Facebook page for more details and look out for our next Paediatric First Aid training.

As we start our new financial year on

April the first, we have the challenge of raising nearly £100,000.00 to keep The Maple Tree running for the next year. One of the ways to support our charity is to become A Friend of the Maple Tree, offering monthly financial support. Another way is to volunteer at one of the sessions above. We need support on Mondays and Wednesday, both mornings and afternoons. Are you able to help?

(Charity number:1174117)

We are here to help, if you need advice or support:

01865 236700 or 07849 466249

info@mapletree.org.uk

www.mapletree.org.uk

FB: www.facebook.com/TheMapleTreeWheatley

Instagram: [@themapletreecentre](https://www.instagram.com/themapletreecentre)

Laura Spencer | Centre Manager

MOBILE FISH AND CHIP VAN

EVERY WEDNESDAY 4.30PM TILL 8PM



HOWE & CO SERVING
WHEATLEY / LITTLEWORTH PARK / FOREST HILL

07376395678

FULL ROAD LIST ON FACEBOOK
facebook.com/mobilechippy

ONLINE TRACKER AVAILABLE

OVER 20 DIFFERENT STOPS

Excellent Quality Freshly Cooked Food Jayne Clark

Qualified Cordon Bleu Cook
Established 27 Years

- Corporate Events, Conferences
- Drinks Parties, Canaps
- Dinners, Buffets
- Wedding Receptions & Funerals

- Locally Sourced Fresh Ingredients
- Personal Service
- Innovative Menus
- Full Service Capabilities

01865 872197
www.jayneclark-catering.co.uk

39 Littleworth Road, Wheatley,
Oxon OX33 1NW



A popular Supper Club and private caterer in Wheatley, Oxfordshire

Durban Spice Supper Club is something truly unique where we offer traditional South African influenced cuisine served in the comfortable surroundings of our home restaurant. Our food has its roots in Indian, Dutch, Malay & African heritage. It is fragrant, full of flavour with a touch of spice.

We offer a variety of menu options on most Friday & Saturday nights ranging from 3 - 5 courses and often do pop up take aways! We are available for private bookings.

Shabir Ally – 07378322881
shabs@durbanspice.co.uk

www.durbanspice.co.uk

Follow us on Facebook & Instagram
** Gift Vouchers available**



Our bread is *handmade* with *traditional* slow ferment methods.

Friday night is *Pizza Night!*

Order online, by phone, or by WhatsApp - 07591946389

Learn to bake!

We offer online and onsite **Bread Making Courses.** Pop in, or head to www.cornfieldbakery.com for more info!!

We sell a range of fine foods, gifts + local produce



01865 872682



A family friendly sports and social club showing all major sporting events. We also have a great snooker room, pool table and several dart boards.

New members are always welcome and can sign up with the membership forms available from the club.

We have bingo every Monday, with a raffle and final flyer game for a chance to win £100 and Poker every Tuesday.

We have a function room which can be used for many occasions including; weddings, birthdays, christenings, baby showers and any other occasion you wish to celebrate. Please pop in or call us (01865 873530) to discuss this further or for more information.

SOCIAL MEDIA: Twitter (@wheatleynewclub), Instagram (@wheatleynewclub) and Facebook (The New Club Wheatley). In addition, keep an eye out on our website www.thenewclubwheatley.com.

COMING UP:

Saturday 13th April – The Grand National (big screens, bookmaker, food) open from 12pm FREE EVENT

Saturday 13th April – Music from singer Adam Matthews (7:30pm) FREE EVENT

Saturday 4th May – Mudslide & The Revelators (9pm) FREE EVENT

Saturday 18th May – Music from singer Paul Martin (9pm) FREE EVENT

ABOUT FACE Hair & Beauty

AWARD WINNING UNISEX HAIR AND BEAUTY SALON IN OXFORDSHIRE --FOR Haircutting, styling -Organic, Vegan Colours-Perming-WEDDING Hair & Makeup-All Waxing - Electrolysis -Red Vein Removal-CACI natural face lift Facial-.OAP rates follow the window.

Call 0771 1336092 to book your Appt.
42 Church Rd Wheatley OX33 1LZ



Newly Refurbished
Gift Vouchers Available



Located off the High Street in Wheatley, between Nail Art & Beauty and The Salon, we offer a range of non-invasive, holistic treatments

- | | | |
|------------------|-------------------|---------------------|
| Massage | Reiki | Indian Head Massage |
| Reflexology | Life Coaching | Holistic Beauty |
| Hypnotherapy | Hot Stone Massage | Chiropractic |
| Sports Therapies | Homeopathy | Foot Health |
| Aromatherapy | Counselling | Nutritional Therapy |

45A High Street, Wheatley, Oxford OX33 1XX

For more information and to meet or join our therapists visit

www.wheatley-clinic.co.uk or call Mark on 07881 516969





OAK HAIRDRESSING

STRENGTH~GROWTH~INDIVIDUALITY

01865 872830

72 High Street, Wheatley, Oxford, OX33 1XP | oakhairdressing@outlook.com

Wheatley Dental Practice | 01865 873314

We are currently accepting new patients at our friendly local dental surgery.
Please phone our receptionists or call in for more details!
Tooth whitening and facial aesthetic treatments available.

Dental Surgeons: Catherine Peers BDS, Claudia Conde MClInDent London

Dental Hygienists: Rachel Hyde, Julie Davies

96 Church Road, Wheatley, OX33 1LZ

wheatleydental@gmail.com

OXSPINES OSTEOPATHY

for the whole community
from babies to over 80s

Swift, effective pain relief.

Fixed in a few sessions.

No need for a long NHS wait. Highly
respected clinic.



Call 07894 151654 or book online

www.oxspines.com/book

90 High Street Wheatley OX33 1XP

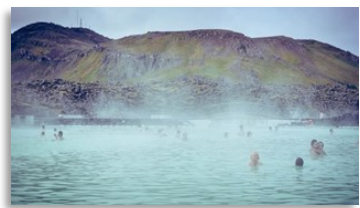


Janet.lewis@travelcounsellors.com 01865 989770

Last year I took a small group to Iceland and it was a great success. I highly recommend seeing this wonderful country, so why not get a trip booked similar to what we did?

Flights, transfers, 3 nights accommodation including breakfast, Northern Lights Cruise, Sky Lagoon, Golden Circle by Super Jeep and Snowmobile on a Glacier! Plus, they say 2024 is supposed to be a super year for Northern Lights, with solar storms at their peak of their typical 11-year cycles!

Call me with dates and I'll put a special trip together!



FOR YOUR FAMILY'S CHIROPRACTIC HEALTH



Garsington House
38-40 Oxford Road
Garsington
OX44 9AB

We can help you by relieving

- ◊ Back or neck pain
- ◊ Headache, including migraine
- ◊ Other joint and musculoskeletal problems

Easy parking
Evening appointments

Chiropractors

Charlotte Chesson BSc DC MMCA

☎ 07941 266863

Coral Adhyaru DC AMC FMCA

☎ 07880 852269



It's for **the parent**

WHEATLEY FIRE STATION IS RECRUITING



OXFORDSHIRE
FIRE & RESCUE SERVICE



OXFORDSHIRE
COUNTY COUNCIL

We are an On-Call station, which means the Fire Fighters all have other jobs. Some are builders, some work in shops or from home. Some even do their main job from the station, which saves on their internet and electricity bills.

We are all trained to the same level as our full-time colleagues, the only difference is we do it in our free time around our lives.

We attended over 250 incidents in 2023, and now we are looking for our next team member. Could you support your local community by offering some time and becoming an On Call Fire fighter. It doesn't matter your age, height, gender, or any other perceived barriers. All we ask for is willingness to learn!

Pop down on a Wednesday evening between 19:00 and 21:00 to speak to our crew or contact our new **Watch Manager Mike Baker** on **07808 654874** or michael.baker@oxfordshire.gov.uk for a chat and let's do something amazing this year!

NHS
Oxford Health
NHS Foundation Trust

Oxfordshire IAPT Service

TalkingSpace
PLUS

Overcoming Anxiety & Depression Together

**Feeling low?
Anxious? Stressed?**

**We can help you -
let's start talking.**

01865 901 222

www.oxfordhealth.nhs.uk/talkingspaceplus



Free NHS talking therapies for people in Oxfordshire



**KENNETT ROAD
DENTAL PRACTICE**

A lifetime of dental health for you and your family!

- ✓ New Patients Welcome
- ✓ Private and NHS
- ✓ Friendly Hygienist
- ✓ New Refurbished Practice

Visit kennettdental.co.uk
or call **01865 761965**



**1 KENNETT RD, HEADINGTON,
OXFORD, OX3 7BH**

THE 1:1 DIET

by **Cambridge Weight Plan**®



- **DELIVERED TO YOUR DOOR**
- **ONE-TO-ONE SERVICE, NO GROUP MEETINGS**
- **PLANS TO SUIT YOUR LIFESTYLE**

Contact your local Consultant: Jo Franklin
phone 07710 342839 email Jofranklin10@aol.com
www.one2onediet.com/consultants/22293/1/Jo
Based in Wheatley, I cover all of Oxford



Morland House Surgery

Morland Close, Wheatley OX33 1DP

The usual surgery opening hours are Monday to Friday 8am to 6.30pm
Saturday mornings (excluding Bank Holiday weekends) 8am to 10.30am,
for **prebooked** consultations only

Enhanced access hours are offered outside these times, please speak to
one of the reception team on 01865 872448 for more information.

When the surgery is closed, please contact the Out of Hours service by
phoning 111.

The NHS launched the **Pharmacy First Service (PFS)** on 31st January (see
NHS Pharmacy First Service (PFS) | NHSBSA) Appointments can be booked
directly with participating pharmacies for the treatment of 7 common
health conditions namely sinusitis, sore throat, earache, infected insect
bite, impetigo, shingles, uncomplicated urinary tract infections in women.

Pharmacists can offer advice to patients and supply NHS medicines where
clinically appropriate. This will help reduce the pressure on Morland House
Surgery. As an example, appointments with Wheatley Pharmacy can be
booked (often the same day) by phoning

01865 874047 or via the website www.wheatleypharmacy.com/book

Group Consultation Clinics – We are excited to offer group clinics for
certain health conditions, currently menopause and diabetes. The benefits
are many including a more thorough examination of your condition, having
your questions answered, sharing issues with others going through the
same issues, and spending longer with a GP.

For a wealth of information and guidance on managing a vast number of
health conditions, symptoms, and treatment, please visit www.morland-house.co.uk

Also on the website are details of the new rules relating to accessing your
medical records - see <https://tinyurl.com/3879mz6p>

Our Lady of Lourdes

01865 762433 | corpuschristi.oxford@rcaob.org.uk

Who is Our Lady of Lourdes?

From the earliest times, churches were built where their patron saint was buried but a new church may be dedicated by a Bishop to any chosen patronal saint. But who is Our Lady of Lourdes, chosen by the Catholic community of Wheatley, 60 years ago?

Lourdes is a small market town in the foothills of the French Pyrenees. In 1858, while gathering firewood with her sister in a nearby grotto, a poor country girl, Bernadette, said she saw a "Lady" appearing among the rocks. On a subsequent occasion, "the Lady" told Bernadette to dig in the ground and to drink from the small spring of water that began to bubble up. To everyone's surprise, the next day clear water flowed from the grotto, which still persists today, and, on a later visit, "the Lady" told Bernadette that a chapel should be built there.

Despite much scepticism because no one else could see the apparition, rumour was that "the Lady" must be the Virgin Mary; it was only later that "the Lady" described herself to Bernadette as The Immaculate Conception, a dogma of the Church which the Pope had proclaimed four years earlier. It was not language which a peasant girl would know or understand, and this convinced the Church that Bernadette had indeed seen an authentic apparition of the Virgin Mary. That "Lady" became known as Our Lady of Lourdes.

Miraculous healing power began to be attributed to the water at the grotto, attracting pilgrims, from far and wide, even to this day. The young Bernadette became a nun and died at the age of 35; she was canonised a saint in 1933.

No doubt it was the increasing interest, post-war, in Lourdes as a place of miracles, along with the "miracle" of achieving their vision of a church in Wheatley, which led the Catholic community to petition the Bishop to dedicate Wheatley's Catholic Church to Our Lady of Lourdes.

John Guy

Wheatley United Reform

01865 873859 | secretary@whea

URC News

On a chilly Friday afternoon at the start of March, about fifty members of various Wheatley churches met in the UC to celebrate a particularly poignant World Day of Prayer, as the service had been written by women from Palestine. After some very welcome Middle Eastern refreshments, which also supplied the Sunday tea that week, as we left, many had in our minds the phrase from Fred Kaan's hymn which we'd shared 'Put peace into each other's hands and like a treasure hold it'.

Our current Time for God worker, Wiebke Keizers, has been involved in a number of new youth and family initiatives, as well as building on those developed by her predecessor Elisa, such as the Friday afternoon hangout in the church hall. Wiebke has been assisting at the Maple tree nursery and also with both Guides and Brownies in the URC hall on Wednesday evenings.

Wiebke and Alexandra Ojewande attended the

Wheatley URC Church

wheatleyurc.org.uk

URC Youth National Assembly in January, and Synod Youth Executive at Sutton Courtney Abbey in February.

If you are interested in learning more about the Wheatley URC church and congregation, our monthly newsletter is available online at wheatleyurc.org.uk/about/newsletters. A recent article, written by Jean Boxall, will be of interest to Wheatley residents, as it describes how long-time resident Anita Edmundsen, who passed away a couple of years ago, designed and created the beautiful glass cross still on display at our church. Jean and Anita attended a stained-glass class and Anita was inspired to make the cross, with its four ears of wheat representing the four churches in Wheatley, and the symbolism of various textures to represent our slightly different understandings of our core faith. Please look at the article in our January newsletter for more details, or pop in to look at the cross itself.

Mike Matejtschuk

St Mary's Church

01865 872224 | vicar.wheatley@gmail.com

Farewell from the Vicar

This is my last contribution to Wheatley News as I am retiring on 14th April after twelve years as Vicar. In my time as Vicar I have baptized 119 children, married 44 couples, and taken 201 funerals. It has been a privilege to be a part of this community's life in times of joy and in times of sorrow, and I thank you for letting me and Julia be a part of the life of this place.

My last service here will be on Sunday 14th April at 10.30am in the Primary School hall, as St Mary's is still a building site. It would be great to see you there.

Looking back through the fog of the Covid Lockdown it is difficult to isolate specific highlights of my time as Vicar, apart from the commencement of the building works to improve St Mary's church building. It has taken many years of planning and fund-raising, but in a few months the building will be handed back to the parish with better heating and other facilities. The dream has always been to make the building more accessible to the community and we are looking forward to seeing many events taking place.

It will take a little while for a new vicar to be appointed, and in the meantime the churchwardens (Jane Fanning and Zannifer Mason) will head up the team which will keep things going during the vacancy.

Thank you again for all that you are. Wheatley has been a great place to live.

Revd Nigel Hawkes



REVIVAL at St Mary's

Steady As She Goes

Work continues on the Project. Underfloor heating has been installed along with plumbing for new toilets. As soon as the screed has fully dried, the floor will be laid in stone, together with new tiling. Work has also begun for rewiring and installing the radiant heaters. Finally, when builders have finished, the Church will be redecorated, hopefully in July, ready for a restart in the autumn.

When the work is finished, how will it all look? Very much like the old St Mary's. Plans for several extras, such as a first-floor meeting room and work on the porch and vestry had to be postponed, thanks to the soaring costs. But a warmer, brighter, more welcoming place it will certainly be.

Spring and early summer, will be a challenging time for us all. Nigel Hawkes, our vicar retires in mid-April and will be moving to Pershore. Nigel has been a wonderful presence and he will be much missed. However, a number of generous people have volunteered to hold services. These include Bishop Humphrey Southern of Cuddesdon, David Bender Samuel, who leads the wider Benefice, and former curate, Lucy Gardner. Meanwhile, services continue at Our Lady Lourdes, which is proving a very welcoming second home.

Come September, there is plenty to look forward to. Besides a service of thanks and celebration on Sunday 8th September at which Bishop Gavin of Dorchester will preside, we are putting together a programme of events for the reopening.

These will include a second Clubs and Societies Fair, after the very successful event of three years ago; a concert by the Angelorum choir, a full-scale musical for children, a production of Shakespeare, and, we hope, regular meetings of our local Brownies, Guides and Rangers.

We look forward to welcoming you back to St Mary's as soon as the time is right.

If you or your society are interested in using the newly refurbished church for meetings, classes, or other events, please get in touch:

secretary@stmaryswheatley.org.

WHEATLEY REFUGEE SUPPORT GROUP

Continuing our programme of film viewings, on a cold night in January many of our supporters turned out for Ken Loach's recent heart-warming 'The Old Oak'. This describes two communities - a Durham village and Syrian refugees - overcoming mistrust through a shared response to hardship and tragedy, leading to solidarity.

If you missed this wonderful film, or wish to see it again, we can lend you the DVD. Contact wheatleyrefugeegroup@gmail.com.

Save The Date

On Thursday evening **12th September** a speaker from Global Aid Network (GAIN) will talk about the work that they do in many parts of the world, and in particular with refugees in Greece, Eastern Europe and Ukraine. GAIN support us by picking up the collections that we make from time to time, and we hope this talk will give a greater understanding of what they do, and how.

This will be followed in late September/early October by another collection of clothes, bedding and survival gear.

WHEATLEY UKRAINIAN REFUGEES CO-ORDINATING GROUP

Tuesday 23rd April at the Merry Bells 7pm

A Photo Exhibition and Humanitarian Talk about the reality in Ukraine today, from a Ukrainian lady who came to Wheatley at the start of the Russian invasion. She has set up the Ukrainian Medical Charity based in London acting as a bridge for essential medical supplies to be delivered from the UK to Ukraine hospitals and the frontline.

For more information and to reserve a place please contact either cyril@cjnewton.co.uk or wheatleyukrainegroup@gmail.com.

Cyril Newton

WHEATLEY CARE SCHEME IS IN NEED OF MORE VOLUNTEER DRIVERS

Wheatley Care relies on the kind cooperation of its Volunteer Drivers to allow it to continue to provide a vital service to the residents of Wheatley, Holton & Littleworth.

Have you recently Retired? Can you HELP US!!!

If you can spare any time to transport Wheatley, Holton & Littleworth residents to medical appointments.

You will be reimbursed for your petrol cost.

So, if you feel this is for YOU:

Please contact **Kath Lamont 01865 876609**

Notices | Clubs | Events

Wheatley Parish
Council

ANNUAL PARISH MEETING

and SODC Waste Team
presentation

Merry Bells Main Hall
Mon 22nd April
From 19:00



VACANCIES PLAY/YOUTH WORKERS

5 hours per week
£12.68 per hour
[martin.gillett](mailto:martin.gillett@oxonplay.org.uk)
[@oxonplay.org.uk](http://oxonplay.org.uk)

Wheatley & Holton PLAY & ACTIVITY DAY

Wheatley Playing
Fields
Sat 13th July
11:00-15:00

Wheatley Good Neighbour Scheme

For befriending -
transport to events -
and more

07907 104856

WGNS here to support
our community

Community Larder

Thursdays
14:30 -15:30

Wheatley URC
Help reduce food
waste and support
local causes

THE MERRY BELLS AGM

Thursday 6 June
6.30 pm
Merry Bells Coffee Room
High Street, Wheatley

All Wheatley residents
are eligible to attend
and vote



Holton and Wheatley Cricket Club

welcomes new
players in 2024 for
Sunday afternoon
friendly matches.
Contact: Hugh Kitchin
07788 672864

Wheatley Productions Playreading & Auditions

11th April 2024, 7.30PM
United Reformed Church
Wheatley
Come along to find out
more about our next
production
[wheatleyprods](mailto:wheatleyprods@gmail.com)
[@gmail.com](mailto:wheatleyprods@gmail.com)

WHEATLEY CARE SCHEME

For transport to hospital,
surgeries etc. NOT to shops!

For all residents of
Wheatley, Littleworth &
Holton

**TO BOOK, PLEASE PHONE
AS SOON AS YOU HAVE
YOUR APPOINTMENT**

07505 543750 Answerphone
Use your Blue Badge if you
have one

Wheatley Parish Council

LOCAL PRODUCE MARKET

In and outside the
Merry Bells
Sat 20th April
10:00-14:00

Wheatley Village
Produce Association
Tue 9th April
400 Years of Oxford
Botanic Garden
Mark Davies
7.30pm, Merry
Bells
wheatleyvpa@gmail.com

Wheatley Village
Produce Association
Tue 14th May
Tubs & Hanging
Baskets
Carol Parker
7.30pm, Merry
Bells
wheatleyvpa@gmail.com



**Sustainable
Wheatley**

SWAPSHOP

Merry Bells

Sat 27th April

09:00-10:15 Drop off
useable goods

10:30-12:00 Take away
as much as you like, even if
you didn't bring anything

St Mary's Ladies Guild

2:15pm URC Hall
Third Tuesday in month

Hear speakers touching
on many subjects and
charities
Open to all

Mary John 872909

St Mary the Virgin
**SALE OF PLANTS,
BOOKS AND CAKES**

Friday May 10th
9.00-12.00

Merry Bells forecourt
In aid of church funds
Donations welcome.
Contact Elaine Parsons
01865 873437

[stmaryswheatleyevents
@gmail.com](mailto:stmaryswheatleyevents@gmail.com)

Oxfordshire Artweeks

Open Studio

May 18th - 27th

2 – 6pm

3 Barns Close, Holton

Come and see

Christine Bainbridge's
paintings

and enjoy tea and cake.

Open to everyone.



Wheatley Singers

Wheatley
Singers

Gala Concert in St Mary's Church Great Milton

Sun 19th May 4:00pm
A selection of choruses
& songs from opera,
oratorio & musicals
See article on [page 56](#)

Wheatley URC

Sunday Tea

First Sunday of month

14:30 to 16:00

Come to meet and
make friends with
tea, cakes, and chat
in the **URC Hall**

Day by Day

MONDAY

Wheatley Oaks FC | Holton Playing Fields | 19:00-20:00 | Women 30+ | enquiries.wofc@gmail.com

Mindfulness Sitting Group | URC | 08:50-09:40 | 01865 876288 | jmarkgwilliams@gmail.com

Not So Young Club | URC Hall | Fortnightly exc. B/H | 14:00-16:00 | albarjoiner@btinternet.com

Friends of Wheatley Library Fibre Group | 1st & 3rd in month | 14:00-16:00

Friends of Wheatley Library Art Group | 1st & 3rd in month | 16:00-18:00

Beaver Scouts | Scout Hut Holloway Rd. | Term time 18:00-19:00 | 07962 243216

Messy Mondays | Maple Tree Centre | 10:00-11:30

Twinnies | Maple Tree Centre | 14:00-16:00

Wheatley Bridge Club | Holton Village Hall | 19:00 | 01865 874017

Badminton Club | Park Sports Centre | 20:00-22:00 | 07769 827335

Zumba | Wheatley Primary | 19:00-20:00 | Maz: 07773 651154 mmccann36b@hotmail.com

TUESDAY

Wheatley Library | Open 14:00-19:00

Rugby Club Seniors Training | Wheatley Playing Field | 19:00 | To book 07768 300314

Wheatley Women's Institute | Merry Bells | 3rd in month | 19:15 | 01865 558167

Wheatley Singers | URC Hall | 19:15-21:00 | 07769 037110 | All welcome

Wheatley Village Produce Association | Merry Bells | 2nd in month | 19:30

Flow Fitness Pilates | Merry Bells | 10:00-11:00 | info@flowfitness.org.uk

Once Upon a Rhyme Time | Maple Tree Centre | 10:00-11:30

Merry Bells Coffee Room | 10:00-12:00 | 01865 873996 | All welcome

St Mary's Ladies Guild | URC Hall | 3rd in month | 14:15 | 01865 872909 | All welcome



The Maple Tree

Are you looking for a venue for a child or family friendly activity? Ask us about our reasonable rental rates

info@mapletree.org.uk

WEDNESDAY

Parish Surgery | Parish Office, High Street | 09:30-11:30

Little Explorers | Maple Tree Centre | 10:00-11:30

Maple Chefs | Maple Tree Centre | 13:00-15:00 | To book: bit.ly/mapletreeeb

Acorns Theatre Music | Merry Bells | 09:30-10:30

Wheatley Library | Open 09:30-13:00 & 14:00-17:00

Vinyasa Yoga | Merry Bells | 09:30-10:30 | sparkyoga1111@gmail.com | 07769 584255

Pop-up Pilates | Merry Bells | 18:00 & 19:00 | info@pop-up-pilates.com | 07731 321991

Cub Scouts | Scout Hut Holloway Rd. | 18:45-20:15 | 01865 874284 | Boys & Girls Age 8-10½

Guides & Rangers | URC | Term time 19:00-20:30 | Age 10+ | wheatley.guides@yahoo.co.uk

Brownies | URC | Term time 17:30-19:00 | Age 7-9 | 1stwheatleybrownies@gmail.com

Merry Bells Coffee Room | 10:00-12:00 | 01865 873996 | All welcome

Baby Music Group | URC | Via Zoom | 10:00 | Term time only | Rachel 07505 131124

Football Fitness | Tiger's Retreat, Garsington | 19:00-20:00 | yohannadam@yahoo.co.uk | Age 30+

St Mary's Church | 01865 872224 | vicar.wheatley@gmail.com

- Holy Communion | 12:00 | Must pre-book

THURSDAY

Mindfulness Sitting Group | URC | 08:50-09:40 | 01865 876288 | jmarkgwilliams@gmail.com

Wheatley Walks | Car park behind 6th Form Centre | 10:00-11:00 | 01865 873430

Seated Pilates | Merry Bells | 11:30-12:30 | info@pop-up-pilates.com | 07731 321991

Morning Tea or Coffee | URC | 10:30-12:00 | 1st & 3rd in month | Bring a friend

Memory Cafe | URC Hall | 10:00-12:30 | 2nd in month | laurencelalanne99@gmail.com

Wheatley Library | Open 14:00-17:00

Community Larder | Wheatley URC | 14:30-15:30

Baby and Bump Cafe | Maple Tree Centre | 09:30-11:30

Maple Tree at Forest Hill | Forest Hill Village Hall | 11:00-12:00 | info@mapletree.org.uk

Wheatley Village Archive | Wheatley Library | 14:00-16:30 | 01865 425909

- By appt only | please email info@wheatleyarchive.org.uk

Rugby Club Seniors | Wheatley Playing Field | 19:00 | To book 07768 300314

Explorer Scouts | Scout Hut Holloway Rd. | 19:00-21:00 | 07745 285938 | Age 14½-18

Pilates | Merry Bells | 09:45-10:45

Day by Day

FRIDAY

Wheatley Library | Open 09:30-13:00 & 14:00-18:00

Table Tennis | URC Hall | 10:00 | All abilities catered for | val_farmer40@hotmail.com

Horspath Hub Coffee Morning | 10:00-12:00 | 07591 933964

Coffee Morning w/ Wheatley Primary Sch. | Maple Tree Centre | 08:45-09:45 | Drop-in

Little Chatterboxes | Maple Tree Centre | 10:00-11:30 | Drop-in

Scouts | Scout Hut Holloway Rd. | 19:00-21:00 | 07745 285938 | Boys & girls age 10½-14

St. Mary's Bell Tower Practice | St. Mary's Church | 19:30-21:00 | 01865 872250

Merry Bells Coffee Room | 10:00-12:00 | 01865 873996 | All welcome

Martial Arts | Primary School Hall | 07731 512682 | Ages 3-7+ | mrsfox@mattfiddes.com

SATURDAY

Parish Surgery | Parish Office, High Street | 09:30-11:30

Wheatley Library | Open 09:30-13:00

Family Fun | Maple Tree Centre | 3rd in month | 10:00-11:30

Scrabble Club | Location varies | 1st in month | 19:30 | 01865 872628

Our Lady of Lourdes RC Church | 01865 762433 | corpuschristi.oxford@rcaob.org.uk

- Vigil Mass | Our Lady of Lourdes, Crown Rd. | 18:00

SUNDAY

Wheatley Minis Football | Holton Rugby Club | 09:00-10:00 | Ages 4-7 | 07756 608744

Family Board Games Café | URC Hall | 2nd in month | 14:30-17:00 | kevin@kbetts.com

St Mary's Church | 01865 872224 | vicar.wheatley@gmail.com

- Holy Communion | 08:00
- Parish Praise | 1st Sunday in month | 10:00
- Sung Eucharist | 2nd, 3rd & 4th Sunday in month | 10:00
- Food Bank Sunday | 4th Sunday in month | 10:00

United Reformed Church | 01865 873859 | secretary@wheatleyurc.org.uk

- Morning Worship with Holy Communion | 1st Sunday in month | 10:00-11:00
- Pulse Wheatley Youth Group | Every week term time | 19:00-20:30
- Afternoon Tea | 1st in Month | 14:30-16:00

Wheatley Community Church | office@wheatleycommunitychurch.org

- Wheatley Primary School | 10:30



2024 is racing by and the year's activities are underway



In February through her talk, **Bellringing - The Ultimate Heavy Metal Band**, Katie Lane let us into the art of bellringing with the help of a model bell. There is a lot of technique involved in ringing correctly and terminology too – Look to! Treble's Going! and She's Gone are just a few examples.

Now some of us will know more about what is happening when we again hear the bells of St Mary's ring.

The AGM, the Society's 50th, in mid-March was a "sell out" with over 80 people attending. It seems the offer of a glass of wine and the promise of a talk by Neil MacCormack brings lots of people out on a Friday night.

During his talk, **Farewell and Thank You**, he regaled us with wonderful stories from his career from high flying corporate life to running a post office in Bath, then in his home in Wheatley, and finally the Old Bank. Clearly, he enjoyed being our postmaster.



Although the Wheatley Society has undergone quite a change in its committee personnel it is well set to continue with its programme for 2024/2025. The first being a CPR and AED training in emergency skills including the use of the defibrillator in early April. This has a limited number of participants and so is not an open event. However, in early May there will be a short walk around Waterstock open to all. This is a beautiful area, often at environmental risk and under developmental threat. The walk will be an opportunity to see the natural flora and fauna there and the steps being taken to protect them. More details to follow.

As the retiring chair after 7 years this is my 43rd bi-monthly contribution to this Newsletter and I can only thank the editors for always accepting my deadline copy – but I will appreciate not being constantly aware of how quickly two months pass. Thanks to all for your support.



Local plant and tool hire



We stock everything from cordless drills to 21 tonne excavators, including all you need for an event. Our range is of the highest quality because we only stock leading brands.



greenplant.ltd.uk 01865 876000
mail@greenplant.ltd.uk
Unit 1, London Road, Wheatley OX33 1JH

Greenplant.



01865 872002 / 07941 334102
GARYDAVISBUILDING@GMAIL.COM
WWW.GARYDAVISBUILDING.CO.UK

BUILDING IN OXFORDSHIRE SINCE 1980

We offer a complete building service where every aspect of the project is managed and implemented by our established team.

Whether you require a small house alteration, a garden building, an extension or a new build property, you can rest assured that Gary Davis Building will offer you peace of mind for quality and reliability.

Call us today for a free estimate on 01865 872002 or 07941 334102.

SERVICE, PRODUCTS, KNOWLEDGE, LOCAL, & INDEPENDENT

- ✓ Competitive prices
- ✓ Comprehensive range
- ✓ Experienced team



[GRANTANDSTONE.CO.UK]

Grant & Stone

FOR ALL YOUR TRADE SUPPLIES:
BUILDING | PLUMBING | ELECTRICAL

A.W.MOBBS OXON

BUILDING SUPPLIES



For Oxfordshire building supplies, A.W. Mobbs is a family run business serving Oxford and the home counties with building supplies. We are situated just outside Oxford next to the major route-ways out of Oxfordshire, so we can deliver to our customers quickly and efficiently. Originally a traditional coal merchants, we have diversified and expanded into a modern competitive builders' merchants.

BUILDING MATERIALS
LANDSCAPING
FUEL & HEATING
WATER TREATMENTS

Contact our dedicated sales team

**SERVING
TRADE &
PUBLIC**

01865 872691 | sales@awmobbs.com
www.oxfordbuildingsupplies.com

Aw Mobbs, The Coal Depot, London Road, Wheatley, OX33 1JG

SHEPHERD BROS.

of Horspath



**NEW PROPERTIES * EXTENSIONS * LOFT CONVERSIONS
ALTERATIONS * GROUND WORK * LANDSCAPING**

Shepherd Bros., founded in 1986, can boast over 60 years of experience in the industry between us and can undertake all domestic construction work, however large or small the job. As a small, local, family run firm we strive to deliver a professional, honest and friendly level of service and to exceed your expectations.

We look forward to hearing from you to discuss your requirements

LANDLINE: 01865 872934 DEAN: 07836 643 878 PAUL: 07721 403 863
EMAIL: info@shepherdbrothers.co.uk
26 MANOR DRIVE, HORSPATH, OXFORDSHIRE, OX33 1RW



**CIVIL ENGINEERING
DRAINAGE
GROUNDWORK
SEWER CONNECTIONS
CONCRETE BASES | UNDERPINNING
DUCTING | REINSTATEMENT**

CONTRACTOR TO OXFORD CITY COUNCIL

CONTACT US NOW FOR A FREE QUOTATION
01865 875530 | 07885 703943
michael@gormangroundworks.co.uk

MICHAEL DUFFY PROPERTY MAINTENANCE LTD

Masonry Work, Replacement
Stonework, Stone Repairs & Pointing,
General Repairs

07989 814327
 01865 875980
duffyjr@btinternet.com

Wheatley Painters

Interior & Exterior painting and home repairs.

If it has a surface, then we can paint it!

Info@wheatleypainter.co.uk

Free quote next working day!

07456816763

www.wheatleypainter.co.uk

A trusted locally-based family business, providing painting and decorating, as well as home-repair services, plastering, refurbishment and silicone rendering, to customers across Oxfordshire.



A D OUSLEY Domestic & Commercial ELECTRICIAN



All types of electrical installation work including test and inspection and certification

Tel: Adam on 01844 339793 Worminghall

Mobile 07976352293 (9.00am 5.30pm)

Email: adousley01865@gmail.com

Registered member NIC EIC

MSM Electrical

- Full Rewires
- Extensions
- Extra Sockets & Lights
- Garden Lighting & Power
- Electrical Vehicle Charging Points
- Small Jobs Welcome



Part P

Contact Martin Shaw: 07860 795 605 / 01865 872681 msmelectrical61@gmail.com



ABSOLUTE CARPETS

Contact David Pullen on
07887 875824
 or email
david@absolute-carpets.co.uk

- ❖ Complete measuring, supplying and fitting service
- ❖ Carpet and vinyl samples brought to your home
- ❖ Furniture moving and disposal of old flooring
- ❖ Written quotations with no obligation to buy

Visit our Facebook page: <https://fb.me/Absolute.Carpets.David.Pullen>

David Pullen t/a Absolute Carpets, Greenways, Station Road, Marsh Gibbon, Oxfordshire OX27 0HN

The Window Doctor

**CARE & REPAIR FOR ALL YOUR
 UPVC & ALUMINIUM WINDOW
 & DOOR PROBLEMS**

- Replacement of broken down sealed units
 - misting up inside glass
- Adjust front & back doors that do not shut
- New handles, hinges and door locks
- Replacement of patio door wheels
- New security handles with keys
- New door panels and cat flaps
- New Georgian style or leaded style sealed units
- All insurance work • Burglary damage • Servicing



PLUS INSTALLATIONS OF NEW UPVC WINDOWS & DOORS



Call us for a FREE Survey and Quotation,
No call out charge



Friendly Family Established Business
Cowling & Co.

Tel: 01865 891776
Mob: 07860 435742

www.windowdoctor.co.uk

email: cowlingandcothewindowdoctor@gmail.com

STEVE WILKINSON & SONS PROPERTY MAINTENANCE

- PAINTING (INTERIOR & EXTERIOR)
- RE-POINTING (BRICK & STONE)
- PLASTERING
- FENCING

Telephone: 01865 891554 | Mobile: 07885 538514

ABSOLUTE

Bathroom installations

Plumbing, Tiling, Electrical,
Plastering &
Related building works
Full design & Guaranteed installations
Free Estimates

Paul Bowden Tel: 01865 873277, 07904 246542

ALAN CLARK

For all home maintenance work, please give me a call

FULLY INSURED | NO JOB TOO SMALL

Tel: 01865 451227 Mobile: 07896 856011
alan.clark23@ntlworld.com

OXFORDSHIRE FENCING GROUP


All types of fencing and gate work undertaken

Free no obligation quotes

Jack Sherwood, Wheatley, Oxford

Call: 07595 910559

jacksherwood2008@hotmail.co.uk

oxfordshirefencinggroup.uk 



ABC Gas & Plumbing Ltd

Local gas safe registered engineer

- Boiler installations
- Power flushing
- Boiler Servicing
- Domestic plumbing
- Gas safety checks
- Dripping taps
- Radiators
- Leaks



24 hour emergency call out



01865 368731 or 07849116805
 ABCGasandPM@gmail.com
 www.ABCGasandPlumbing.co.uk
 40 Elm Drive, Garsington,
 Oxford, OX44 9AQ



HUB DEC

PROFESSIONAL LOCAL PAINTING AND DECORATING SERVICES AND GENERAL MAINTENANCE

Individual specifications and quotations provided free of charge with no obligation.

INTERIOR & EXTERIOR WORKS

Fully Insured and Workmanship guarantees provided

Contact Andy : 07956844298

E-MAIL: hubdecorating@gmail.com



Fitted for Life
Kitchen & Bathroom Interiors

propertyrefit LTD.

Local EASY BATHROOMS Trade Supplier.
Buy product & installation via Property Refit.
Call to book an informal home visit.
t - 07711 700277
e - ian@propertyrefit.co.uk

Trade Discount Supplier



EASY BATHROOMS

BATHROOM & TILE SUPERSTORE

Oxford Spires Heating Ltd

ESTABLISHED 1999

INSTALLERS OF DOMESTIC AND COMMERCIAL GAS PIPE WORK AND GAS FIRED APPLIANCES*

BOILER SERVICES AND MAINTENANCE · LANDLORDS GAS SAFE INSPECTIONS AND CERTIFICATIONS

UNVENTED HOT WATER SYSTEMS AND RENEWABLES

ALL ASPECTS OF PLUMBING AND HEATING INSTALLATIONS UNDERTAKEN AND MAINTAINED

ALL WORKS GUARANTEED · FREE QUOTATIONS

*LPG DOMESTIC ONLY

For a prompt and professional service please call on:
Tel: 01865 368342 · Mobile: 07718 389823 · Mobile: 07803 898285
Email: sjasteve@hotmail.com

TAYLORS SERVICES

Extensions . Refurbishments

Kitchens . Bathrooms

Carpentry . Plumbing & Heating

Electrical . Solar PV

General Repairs & Maintenance

Landscaping . Fencing . Tiling

Roofing

01865 876004

www.taylors-services.co.uk





EXCEPTIONAL HOMES
LOOK BETTER WITH SHUTTERS



01235 424 282



Exceptional tailor-made plantation shutters from a local family business based in Holton.

- Bespoke to fit almost any window (including shaped)
- Cool in summer
- Warm in winter
- Noise reduction
- Easy to clean
- Premium appearance

Call 01235 424 282 to book a free no obligation design visit.

WWW.JUSTSHUTTERS.CO.UK

justshutters_oxfordshire on instagram



MOSSINATOR®
ROOF CLEANING SYSTEMS

- Moss Removal & Roof Cleaning & Treatments
- Render & Brickwork Cleaning
- Patio & Driveway Cleaning
- Solar Panel & Skylight Cleaning
- Installation of Bird Protection
- Chimney Cowl Installation

Enhance the appearance of your property with our quality assured, friendly service



01865 362797 - info@mossinator.co.uk

K. J. WINDOWS & DOORS

- UPVC WINDOWS & DOORS
- CONSERVATORIES
- FASCIA & SOFFITS
- BI-FOLDING DOORS
- MISTED & BROKEN UNITS
- REPAIRS

ALL WORK GUARANTEED | CALL KEITH: 07539 367200

PROtect Windows & Doors



Your local specialist, providing a full survey and fitting service for windows and doors.
Repairs and double glazed unit replacements.

10 years insurance backed guarantee on domestic uPVC and aluminium installations.



Unit 2, Littleworth Industrial Estate, OX33 1TZ



01865 875554 sales@protecttradeames.com



L B Plumbing

Toilets, taps, immersions,
showers, leaks and more,
no job too small

Fully insured, free estimates,
no call out charge

**Call Lee 01491 834484 /
07981642688**

 **FixMyStreet.com**

another project from the lovely people at **mySociety**

ASDA Wheatley Community Update

If you have been into the store recently you may have noticed that we have updated the community board and aim to keep it up to date and relevant to share what's going in the community including any local fundraisers.

Please send me any information to add to our events calendar for anything running, as it is useful to everyone in the community but please do not send A4 posters, as we need to avoid overcrowding the board.

During January and February, we had six groups who came to fundraise in the foyer and £1,567 was raised. I am currently working with the Community Emergency Food Bank to run a food drive in May, and we are also looking at running a hygiene collection with the Oxford Hygiene Bank during the year. By the time this goes to print, I will have completed a gift wrap for Mother's Day and an Easter Egg Tombola, both for Tickled Pink, and will update the fundraising amounts in the next newsletter.

Here are two further dates for your diaries if you wish to join us to help fundraise for our two National charities.

Bingo will be run again at Tetsworth Sports and Social club from 7pm onwards to start at 7:30pm on:

Thursday 23rd May (for Tickled Pink)

Thursday 26th September (for Children in Need).

Tickets will be £5 per person. I am planning to run a raffle, so would appreciate any prizes that anyone can offer. Tickets for the raffle will be sold on the night only.

Grant Round 2 opened on the 25th March until 24th May. Please get in touch to discuss our Grant offering.

Our Investing in Spaces and Places grant will open this year, so please start to get in touch with any projects, as we will have the criteria very soon. Last year we had a short window to speak to groups to progress with applications, so will make contact once we have further information.

The new year has started with a health kick by helping to promote healthy eating in schools, preschools and under 18's settings such as Youth Clubs. If you have any involvement with these activities and can help support, please let me know. A number of Better Starts sessions have been booked with schools to run this year.

As part of World Book Day activity, we went along to three settings (First Steps in Chalgrove, Berinsfield Pre School and Horspath Nursery) to read with children. We read the Very Hungry Caterpillar, and children loved to help turn the pages in the book and try and get the Caterpillar to go through the holes. It was great to be able to be involved with these settings.

We are also in partnership with the BBC and Tiny Happy People which aims to support parents and caregivers in developing their children's communication skills. We are looking at promoting these resources alongside our community activity.

Although we are updating our instore systems, my email address remains the same at this point in time: community_wheatley@asda.co.uk so please continue to use this to make contact. We love to hear from you.

Linda Blackmore

YOUR Wheatley Village Archive

Archive representatives were, as advertised in the last Newsletter, present in Wheatley Library on two occasions in January to offer help/advice using the Archive website. Just one person, requiring a refresher course, appeared – demonstrating that those who want to use it have no problems in so doing!



Rose Robinson, who died in 2017, was active in Wheatley archive matters in the 1990s. We have now received from her family her 'History of Wheatley' which, after re-binding is now on the Archive shelf in the library with a digital copy (record 2815). It is well worth reading with additional material. (Search "Rose Robinson" on the Archive website.) Any additional relevant memories of her would be welcome from readers.

This is the second in our series of trades in Wheatley, going back to its origin as a limestone supplier, which underpinned its wealth in the 14th century. The geological map shows the seam of Wheatley limestone (shaded olive). Quarrying took place from the Lye Hill quarry in the north-east (now the Walters Coaches depot), down to the Village Pit. The Chalgrove pit was the first seam which produced the best stone on which Wheatley's wealth in the 13th and 14th centuries was based, with this stone being supplied to many Oxford colleges, for example: Merton College chapel.

The tax returns from 1334 show Wheatley to have been one of the ten richest parishes in the county. Stone was also supplied further afield to Windsor Castle, Wallingford Castle, Cuddesdon Church and Abingdon Abbey. Wheatley's place in the local stone hierarchy was usurped by 1400 by the larger and better-quality stone from Headington quarry.

Quarrying in Wheatley continued to 1800 or so with the stone being used for many of the houses in Wheatley High Street from the mid-1500s. The village pit was the last and largest area of Wheatley to be quarried. The depth of it can be gauged by Templars Close which was built in its base with the Church Road recreation ground having been made up to road level by the mid-1940s. This transformed the old and smelly village refuse dump, which had many previous unsavoury uses, including bullbaiting, badger-baiting, and cockfighting and also for burning waste. As a consequence of the latter, it was plagued by rats and snakes. It remained a pit until the late 1940s.

There is much variety in the quality of the stone construction of the houses in the High Street, of which the very best, categorised as 'Ashlar in courses' is found in the original part of Cromwell House, once an important village farmhouse, built in the 1700s. The stonework in the extension (from early 1800s) is of lesser quality. The 16th century public house - King & Queen - is another fine example. Many of the other houses built from stone quarried from the village pit in the late 18th or early 19th centuries, are categorised as having used "coursed rubblestone".

Steph Cox

Wheatley Village Produce Association

Our local garden club

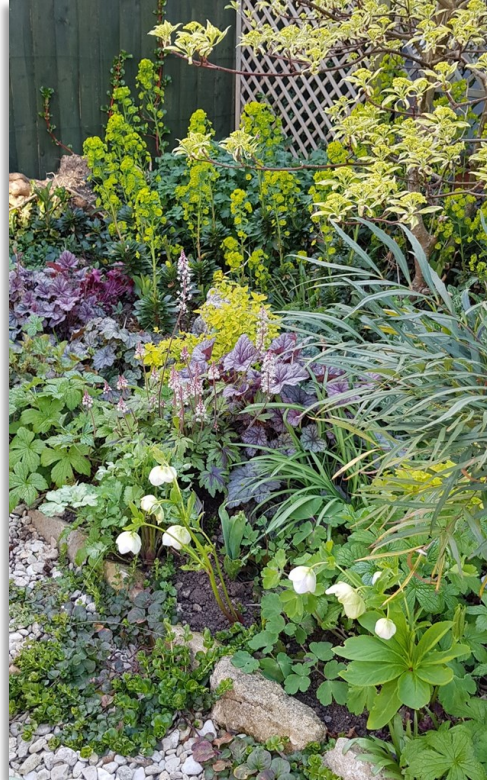
All gardeners are used to watching the weather and making decisions accordingly, but it is not getting any easier. As I write in early March, it is cold, the ground is saturated with copious standing water in the fields.... But April should bring warmer, brighter weather – fingers crossed!

April

Indoors, it is a good time to assess any houseplants, give them a good clean, perhaps divide them and increase watering. Outside, the weeds don't slow up whatever the weather and sowing seeds we want to grow can go ahead. Unruly climbing and rambling roses may need attention and some of my trellis needs repair from winter damage first. Potential for frost damaging embryo fruits will continue through to the end of next month, so beware!

May

Potatoes will need earthing up and overgrown clumps of spring bulbs can be divided. Mowing of lawns can become weekly but do consider leaving some areas uncut to benefit wildlife. If hedges are looking wild and woolly, do check for birds' nests before clipping them back into order. Summer bedding can go out at the end of the month. Viburnum and lily beetle will be active, so vigilance is needed....



Coming up:

Tuesday 9 April:

400 Years of Oxford Botanic Garden with Mark Davies

Tuesday 14 May:

Tubs & Hanging Baskets with Carol Parker, Wheatley Farm Shop

Queries to wheatleyvpa@gmail.com

Geraldine Surman



Wheatley Singers

Wheatley Singers

Happy & Glorious!

Wheatley Singers and Bagatelle Orchestra at St Mary's, Great Milton

On 28 January in Great Milton church, Wheatley Singers, directed by Kate Billimore, gave an inspiring concert, powerfully supported by the excellent Bagatelle Orchestra. Given in aid of Dementia Oxfordshire, thanks to the concert's good attendance and generosity, Wheatley Singers were able to make a substantial donation to them.

The concert opened with the inviting Walton's Crown Imperial. The orchestra produced a regal sound and thrilling climax, well served by the church's friendly acoustic.

A strong contrast led us from the pageantry of Walton to the subtlety of a mature Brahms in his "Song of Destiny". Here, the choir responded to the orchestra's warm tone, with subtle variations of pace, mood, and dynamics.

Handel's four Coronation Anthems still sounded fresh, grand, and joyful:

My Heart is Inditing had a quiet dignity.

In Let Thy Hand be Strengthened, there was a rich, almost mournful tone in preparation for what was to come.

The King shall Rejoice grew swellingly, echoing round the church, making the very stones live.

Zadok the Priest's unmatched opening, beautifully rendered by the orchestra, led to the choir's thunderous entry, with a shiver of "Amen"s leading to the unending "Alleluia."

Wheatley Singers' next concert, again in Great Milton, is on Sunday 19 May 2024, featuring well-loved songs and choruses from opera, musicals, and oratorio.

Do come! Better still, come and join us as a singer. We're a wide range of singers (no auditions), who enjoy the camaraderie and pleasure of singing together every week. Kate leads us with enthusiasm, wit and knowledge, bringing out the best in us all. Rehearsals are relaxed and informal, but effective. Reading music is an asset, but not essential. We meet on Tuesdays at Wheatley United Reformed Church from 7.15pm until 9 o'clock.

For more information, please contact our secretary, Matthew Maier, on 07885 059633 or email matthew.maier@mmaier.co.uk.

Celia Pagel



FASHION SHOW

All shapes and sizes

Female High street brands from £10-£30

Raffle

Drink on arrival

Card/ Cash payments



FRIDAY 10TH MAY 2024

Doors open 7pm, show starts 7.30pm-9.30pm

The Merry Bells, High Street, Wheatley

Tickets £7, inc a glass of wine / soft drink

Available from Country Collections/ Wheatley Estates

(correct cash only) or email:

wheatleywi@oxfordshirewi.co.uk

FAMILY RUN CLEANING BUSINESS

Private **CLEANING**
OXFORDSHIRE

Domestic Cleaning

Carpet & Hard floor
Cleaning

End of Tenancy
Cleaning

Deep Cleaning &
One-off Cleaning

Office & Commercial
Cleaning

Patio & Driveway
Cleaning

Window Cleaning

Hoarder & Bio Hazard
Cleaning

Laundry & Ironing
Services



Fully-trained
in Health &
Safety and
COSSH



Award-
winning
business



Locals' First-
Choice
Cleaning
Service

Contact us now:



01865 58 08 79; 07411 606 609

www.privatecleaningoxfordshire.co.uk

Professional Care & Support in your home

Moira & Linda are Sisters who have more than 40 years consecutive experience individually, within the Care Sector

They have a vast experience & knowledge within the care sector, and are reliable, DBS checked & this is ongoing, professional, insured & self-employed, supply their own PPE, liaise with family members and any other professionals involved.

Services provided:

- All aspects of personal care that may be required, to include bathing, showering, hair wash, dressing, etc.
- Undertake a 15 minute check visit that families find invaluable, to check on their loved ones, these visits may include: monitoring and ensure medication is taken from Dossett box, prepare and serve breakfast, or small lunch, assist to toilet or commode or just generally monitor people's well being
- Preparing & cooking hot meals
- Anything not listed, please do not hesitate to contact us, details below:

Linda McMahon on 07715 600524 or email lindalizzymac@outlook.com

Moira McMahon on 07715 609968 or email moiramaccr@outlook.com



Waterperry Gardens

April & May at Waterperry

The Big Easter Bunny Hunt 31st March – 14th April Join the Big Easter Bunny Hunt around the ornamental gardens. £3.95 per child with a prize! (Children must be accompanied by an adult for whom the normal garden entrance fee applies).

Fritillary Season See the county flower of Oxfordshire in all its native splendour as it flowers throughout April in our wildflower meadow and riverside walk. Normal garden entrance fee applies - £11.50 per adult.

Gnometastic 25th May – 2nd June Half-term fun - help the gnomes who have forgotten their names. £3.95 per child with a prize (children must be accompanied by an adult for whom the normal garden entrance fee applies).

Waterperry Saxifraga Day 25th May, 10am till 4pm

Visit Waterperry Gardens to see the largest collection of Saxifraga in the UK.

Whether you are new to gardening or have a passion for plants, pruning, or crafts, we have a host of one-day courses for you – for more details visit:

www.waterperrygardens.co.uk

Ovenblitz the solution to any dirty oven **Ovenblitz**

**Cleaning the dirty oven - a job you need
never do again. EVER!!!**

**We clean any oven, cooker, hob, extractor,
microwave, BBQ**

**Using non caustic and non toxic
products in your home**

**Prices start from as little as
£35 for a single oven**

Agas and Rayburn priced according to size

Call: 07749 597 627 or go on line:

www.ovenblitz.co.uk

ovenblitz@googlemail.com

Weekend appointments available

We Blitz Your Oven.

ARBOCARE

TREE SURGERY LTD

Qualified and Experienced Arborists

- Established over 25 years
- Contractors to the National Trust
- Crown reductions
- Thinning
- Felling
- Hedge Trimming
- Stump Grinding
- Decay Detection & Tree Reports

Free phone: 0808 1555815

Mobile: 07778811136

www.arbocare.co.uk

A.J. LANDSCAPES

Your Local Landscaper
Fully Qualified
25 Years Experience

- Garden Clearance and Restoration
- Trees & Hedging
- Patios & Paving
- Fencing & Gates
- Ponds
- Planting
- Turf Care
- Drives & Paths

Tony Young Tel: 01865 875883 Mobile: 07721043316

GARDENER

Over 25 Years Experience (Local)
Weeding, Feeding, Mowing, Growing,
Edging, Hedging and More

ALL YEAR ROUND

MARK | 07707 253491

A comprehensive service for all aspects of Tree surgery

From small garden trees to large commercial sites, we offer a complete high quality service, including:

- Crown reduction
- Tree removals
- Stump grinding
- Hedge cutting
- Tree surveys



TC LANDSCAPES

garden maintenance
decking
artificial grass laying

fencing
patios/paths
turfing

Tom Cross Wheatley Oxford
mob: 07719159549 tel: 01865 873750

R Taylor Landscapes

Church Road, Wheatley.
Telephone : 01865 426001 Mobile : 07952634498
www.rtaylorlandscapes.com
e-mail : rtaylorlandscapes@gmail.com



*ALL ASPECTS OF LANDSCAPE CONSTRUCTION,
DESIGN AND MAINTENANCE UNDERTAKEN.*

Patios, decking, fencing, brickwork, turfing,
block paving and general garden maintenance.

Fully Licensed and Insured.

Decorare

LANDSCAPERS TO TRUST

Landscaping



OUR SERVICES

- Brickwork
- Decking
- Fencing
- Lawn
- Pathways
- Patios
- Pergolas
- Sleepers
- Structures
- Water Features
- Driveways

Buckinghamshire
and South Oxfordshire



For more information...
01844 299040
info@decorareltd.co.uk
www.decorareltd.co.uk



Lawnmower Service & Repair

40 Years Experience
A Local Mechanic
Living in Ickford with a workshop in Oakley

Lawnmower Service £45.99:
Oil Change, New Spark Plug, New Air Filter.

Other Garden Machinery Repaired
Rotavators, Strimmers, Hedgecutters, Chainsaws,
4-stroke kart engines, welding and many different
kinds of fabrication

Possible Collection and Delivery Service
Feel free to call with any questions.

Alan 07775 315788



Oxfordshire IAPT Service

TalkingSpace PLUS

Overcoming Anxiety & Depression Together

**Feeling low?
Anxious? Stressed?**

**We can help you -
let's start talking.**

01865 901 222
www.oxfordhealth.nhs.uk/talkingspaceplus



Free NHS talking therapies for people in Oxfordshire



The Merry Bells Village Hall

By the time you read this article, we will have already completed our first three months for 2024 and the year seems to be continuing as well as it did last year. However, as we have written many times before there are always a lot of day-to-day maintenance expenses and major works that are constantly having to be attended to.

The first three months have been no exception, with repairs having been made to our heating system so that it is now functioning well, and some external jobs have had to be done.

Thankfully with your support, we can afford to maintain the Merry Bells as smart and presentable as always. We have a well-resourced kitchen with a dining area, where food and drinks can be served. Plus, we offer a large function room with a bar area, where you can have your Bar set-up or bring in an outside caterer, and a well-equipped sound

system with Wi-fi, Bluetooth and projector.

So, whether it is a large function such as a Meeting, Class, or Private Celebration, we offer the ideal space (a list of classes that take place in The Merry Bells is posted on our noticeboard). Or if it is a small gathering, we can offer our Coffee Room complete with its own 'kitchenette'.

If you would like to have a look let us know or contact us through our website, which reminds us that's another job, we need to invest in! It never stops but we continue to be pleased and proud to offer one of the best Village Halls in the County.

We will be holding our AGM on June 6th (6.30pm in the Coffee Room) at which all Wheatley residents are welcome to come and hear about our activities.

The Merry Bells Trustees

WHEATLEY CARE

Wheatley Care has an important position that we need help filling:

SECRETARY

- Take and distribute minutes for 1-2 hour meetings four times a year.
- Communicate with drivers and deal with all other correspondence.

Please contact: **Kath Lamont—01865 876609**



Photo by Craig Thomas on Unsplash

Exciting Wildlife Pond News!

After almost 12 months of work – appointing an expert freshwater habitat ecologist to assess the land, digging trial pits, monitoring water quality, developing designs, and then applying for a financial grant from Trust for Oxfordshire’s Environment we’re delighted to announce that our application has been successful! 3 large ponds will be dug in the bottom field of the Howe over next few months which we hope will create a series of valuable new habitats on The Howe for many years to come.

Volunteer Working Party Dates for Your Diary

Since November, our amazing volunteers have planted over 690 native trees and hedging plants. They’ve also fixed fences, bashed huge areas of brambles and restored over 100m of hedgerows.

If you enjoy nature, why not come along and join in?

Come for the whole day, or just a few hours. All ages welcome. No experience required. Volunteer perks include FREE hot drinks and homemade biscuits!

- **Sunday April 28th 10am to 4pm** – young tree care inc. weeding and mulching.
- **Sunday May 26th 10am to 4pm** – fencing and bramble root digging with OCV.

Corporate Volunteer Days

Does your employer run an Employer-Supported Volunteering (ESV) scheme? We welcome interest from other local companies or organisations who’d like to enjoy a midweek team-building day on The Howe.

Student and Young Person Volunteers

Looking for opportunities to boost your CV or personal statement for UCAS? Signed up to the Duke of Edinburgh scheme? Volunteering for the Howe is a great way to learn about nature, enjoy the outdoors and boost your personal skill set.

How to Get in Touch

You can get more information on any of these topics on our website howetrust.org.uk or our Facebook page www.facebook.com/howetrust.

Alternatively email maggiiefyffe@gmail.com or call, text or WhatsApp me on 07889 639986.



Wheatley Playing Field Trust

An incorrect date was published in the last newsletter. Our apologies for this. The correct dates of events taking place this summer on the Wheatley Playing Field are as follows:

19th May – Wheatley FC junior football tournament.

22nd June – Wheatley Oaks FC women's football tournament.

29th June – Oxford Downs Syndrome group charity walk and fundraising event.

13th July – Wheatley and Holton Play and Activity Day.

The continuing bad weather has meant many cancellations and postponements of multiple fixtures across all sports. The field is waterlogged with standing water collecting in places. This weather has highlighted the deficiencies in the pavilions, which given their age, have seen a good deal of water ingress over the past few months.

Grants have now been received from

OCC and SODC towards moveable goals and portable floodlights.

Following a request for a basketball hoop, one has been purchased and will be put up on the tennis courts as soon as vehicle access across the field is possible.

For many years, all pitch marking has been carried out by traditional methods. Recently, an early trial using a robot was carried out. This will lead to increased efficiency and flexibility.

Finally, if there is anyone in the community who is thinking about playing netball, football or rugby or just wants to improve their fitness, please contact the clubs directly or use the Trust contact details below.

Do get in touch at:

enquiries@wheatleyplayingfieldtrust.co.uk

www.wheatleyplayingfieldtrust.co.uk

Paul Willmott | Chairman

WHEATLEY WINDMILL

Wheatley Windmill and Millie, the mobile mill will be on show from 11 a.m. until 6 p.m. on **Sunday 12th May** to celebrate National Mills Day. There will be tours up the mill, opportunities to see the sails revolve wind permitting, demonstrations of milling wheat at the barn, flour to take home, several stalls, drinks, and home-made cake. There will also be a musical interlude at 3 o'clock. Admission is free and donations are always welcome.

Best wishes and thanks.

Caroline Dalton | Secretary

SANDRA

HOMWOOD

FUNERALS

We are a privately owned and managed family business with over 65 years experience. Our values are based on providing excellent service to our clients, transparency, fairness, good value and honesty.

Sandra, together with her principal funeral directors Darren Jeffs and Clare Hunter, offer bereaved families a unique, clear pricing structure with a refreshingly modern approach.



Sandra Homewood



Darren Jeffs



Clare Hunter

Headington: 01865 570 700 Marston: 01865 570 000

www.homewoodfunerals.co.uk



At work all day or going on holiday?

I offer dog walking, care for cats & other small animals

Pet Taxi/Ambulance available for your pet transport needs.

Looking for dog lovers to host dog(s) whilst owners are away!

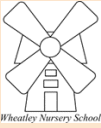
Can you offer a comfortable home & garden?

Enjoy having a pet without the full-time responsibility & get paid!

Tel: 07341 859468

info@oxford.animalsathome.co.uk

www.animalsathome.co.uk/oxford



WHEATLEY NURSERY SCHOOL

'Igniting the spark to become inquisitive learners for life, to know more, to remember more, to achieve more'

Places now available

We are a standalone Maintained Nursery School, led by qualified teachers and early years professionals specialising in Early Education.

Please contact the office to arrange a visit to see our fantastic learning environment.

Littleworth Road Wheatley Oxford OX33 1NN Tel: (01865) 452725

wheatleynurseryschool@johnwatsonschool.org

Funded 15 and 30 hours FREE for 3-5 yr olds

Funded 15 hours FREE for children with 2 year old funding

Breakfast Club Mon-Fri 8-9am | After-school club Mon-Thu 3-5:30pm

Childcare vouchers accepted

Please visit our website for more information

www.wheatleynurseryschool.org



Register Now for September 2024

Nursery Hours 7:30am – 5:30pm for 1–4-year-olds

Our curriculum is planned carefully to provide a wide range of exciting play opportunities and to develop basic skills and the knowledge necessary for a smooth transition into school.

2 Year, 15/30 hours Government Funded spaces available.



Nature Club is running for children between the ages 1-11 years.

All Stars Club Hours 7:30-9.00am and Monday-Friday 3.00-5.30pm

The aim of the club is to provide a wide and varied programme of After School entertainment for children, extracurricular activities as well as offering childcare. Every day we aim to provide a choice of activities in an attempt to cater for the differing wants and needs of children at the Nursery and neighbouring primary School.

Please contact us on 01865 876750 or email us at staff@horspathnursery.org.uk

Visit our website for more information www.horspathnursery.org.uk

Ofsted April 2022 Rating: Good

“Practitioners focus successfully on seeking the views of individual children to plan ongoing activities. Practitioners support children’s play and have a consistent approach and use good quality teaching strategies to extend children’s learning.”



Acorns Nursery



Places available for the next school year

Giving each unique child the tools for life and the love of learning

Our nursery is led by passionate Early Years Practitioners, specialising in Early Years education. Our curriculum is planned alongside our Early Years Lead and qualified Reception teacher.

We are education providers for children from the age of 2 to 5 and are proud to be part of the Wheatley Primary School family, working closely together to build firm foundations for future learning for all children along with access to the vast playing field and forest space on site.



Wrap around breakfast and after school club is available on site through Cool Kids. Opening from 7.30—5.30pm Monday to Friday and also offering a holiday club during half term.

Nursery is open 8.50—3pm Monday to Friday

Visit www.wheatley.oxon.sch.uk and click on the Acorns tab for more information or call 01865 872366 and ask for Sue

Jordell's 5 Star servicing comes without 5 star dealer pricing

Located in Wheatley
Factory Trained Technicians
Local Collection & Delivery
Courtesy Cars

MOT's
Servicing
4w Alignment
Diagnostics
Brakes



JORDELL LTD
PRESTIGE & SPORTS CAR SPECIALISTS
CALL 01865 872999
✉ jordellltd@googlemail.com

53 London Road Wheatley, Oxford, OX3 1YJ



Great Big Green Week Returns

Great Big Green Week this year will take place from **8th June to 16th June** – it is a national celebration of community action to tackle climate change and protect nature and people across the UK (see greatbiggreenweek.com).

Sustainable Wheatley will be running one of our Swapshops on **Sat 15th June** (as well as the next one on **27th April**) and hope to co-ordinate other events taking place during that time. So far, there will also be events at Littleworth Nature Reserve and an Open Day on the Howe Trust. Keep an eye out for more events and details.

If you are planning or want to plan an event that promotes awareness of the harm to our environment, then please get in touch so that we can publicise it under the Great Big Green Week banner.

Sustainable Wheatley is not just for GBGW! If you'd like to get involved and bring new ideas as to how we, as a community, can play our part in addressing the crisis facing our planet, then please get in touch either through our Facebook page or email.

Please get in touch at:

sustainablewheatley.org

sustainablewheatley@gmail.com

www.facebook.com/sustainablewheatley

Tim Blightman

Garsington Players Summer Production 2024

This year the players will be staging Lady Windermere's Fan by Oscar Wilde. The show will run from Thursday July 4th-Saturday July 6th at Garsington Manor. It will be directed by Kate Lockey and Jonathan Kay and will be produced by Marie Holmes.

We will be auditioning for the play at two read through sessions in Garsington Village Hall on Sunday 21st April at 7pm and Thursday 25th April at 7:30 pm.

We welcome new members of all ages over 18, both on stage and behind the scenes. If you think you would be interested in taking part, please contact Marie Holmes at marieholmes24@btinternet.com or join us at one of the read through sessions, where we look forward to meeting you.

Kate Lockey

Shotover Hill: a Jewel on Wheatley’s doorstep

Are you inspired by Shotover County Park? Shotover’s unique ecology is protected by Shotover Wildlife, an independent community organisation. We work closely with Oxford Direct Services and collaborate with Oxford City Council, to conserve, research and communicate the ecological importance of Shotover.

We preserve the wildlife ‘specialness’ of Shotover Hill through knowledge-based conservation work. Our active intervention aims to keep it in optimum health for wildlife, ensuring a home for threatened species and rare habitats. Many of the glades and open spaces you see on the hill today are the carefully considered work of Shotover Wildlife.

Shotover Wildlife has a team of conservation volunteers who regularly give their time and skills to maintain these habitats on the second Sunday of each month. Our conservationists are all local people, perhaps like you. If you are similarly inspired, please do join us. Please visit our website or get in touch:



Shotover Wildlife volunteers creating new acid grassland habitat on Shotover

Shotover Wildlife website (including leaflets and information):

www.shotover-wildlife.org.uk

For further information:

enquiries@shotover-wildlife.org.uk

Gail Gauron

SODC Waste Collections — April & May 2024

Collection day Monday unless *changed	Which bins and other items?
Apr *2nd, 15th & 29th May 13th & 27th	Green, brown, food & oil waste, textiles
Apr 8th & 22nd May *7th & 20th	Grey, food & oil waste, small electricals

Key Contacts

Local Governance:

Oxfordshire County Council | 01865 792422 | oxfordshire.gov.uk
County Councillor Tim Bearder | 07789 754727 | tim.bearder@oxfordshire.gov.uk
District Councillor Alexandrine Kantor | 07581 745221 | alexandrine.kantor@southoxon.gov.uk
South Oxfordshire DC | 01235 422422 | southoxon.gov.uk
Planning Applications | 01235 422600 | planning@southoxon.gov.uk
Wheatley Parish Council | 01865 875615 | clerk@wheatleyparishcouncil.gov.uk

Local information:

Wheatley Post Office | 0845 722 3344 | Open Mon-Fri 09:00-17:30, Sat 09:00-13:00
The Maple Tree (Children's Centre) | 01865 236700 | laura@mapletree.org.uk
The Merry Bells Village Hall | 01865 872073 | merrybells.org.uk
The Howe Trust | Chair | Maggie Fyffe | 07889 639986 | howetrust.org.uk
Wheatley Library | 01865 875267 | wheatley.library@oxfordshire.gov.uk
Wheatley Park Sports Centre | 01865 872128 | better.org.uk/venues/park
Wheatley Park School | 01865 872441 | wheatleypark.org
Wheatley Primary School | 01865 872366 | wheatley.oxon.sch.uk
Wheatley Good Neighbour Scheme | 07907 104856 | wheatleygns@gmail.com

Services:

Police non-emergency | 101 | www.thamesvalley.police.uk
Citizens Advice Oxfordshire | 03444 111 444 | caox.org.uk
To report potholes, fly-tipping, broken paving, vandalism, etc. | fixmystreet.com
OCC Family Information Service | 08452 262636 | fis.enquiries@oxfordshire.gov.uk
OCC Highways | 0845 310 1111 | highway.enquiries@oxfordshire.gov.uk
Missed Bin Collection | 03000 610610 | admin.southoxford@biffa.co.uk
Bulky Household Waste Collection | 01235 422406 | waste.team@southandvale.gov.uk
Housing | 01235 422422 | housing@southandvale.gov.uk
GP Surgery, Morland House | 01865 872448 | morland-house.co.uk
NHS Out of Hours Service | 111 | 111.nhs.uk
Gas Emergency | 0800 111 999 | nationalgrid.com/group/safety-and-emergencies
National Power Cut Helpline | 105 | ssen.co.uk
Burst pipe or leak | 0800 714 614 | thameswater.co.uk
Floodline | 0345 988 1188 | gov.uk/check-flood-risk

Transport:

Oxfordshire Comet | 01865 323201 | oxfordshire.gov.uk/comet
Wheatley Care Scheme (transport to hospital or GP surgery) | 07505 543750
Arriva (280) Bus | 0344 800 4411 | arrivabus.co.uk
Oxford Bus Co. (U1 & London) | 01865 785400 | brookesbus.oxfordbus.co.uk
National Rail Enquiries | 03457 484950 | nationalrail.co.uk

WHEATLEY PARISH COUNCIL LOCAL PRODUCE MARKET



**Saturday 20th April 2024
10am-2pm
in & outside the Merry Bells**

FREE ENTRY

 fresh fruit  bread  vegetables

 dog accesories  meat  chocolate

 cakes  chillies  refreshments

& more

Wheatley Parish 89 High Street, Wheatley, OX33 1XP
T: 01865 875615 E: clerk@wheatleyparishcouncil.gov.uk
W: www.wheatleyparishcouncil.gov.uk

