



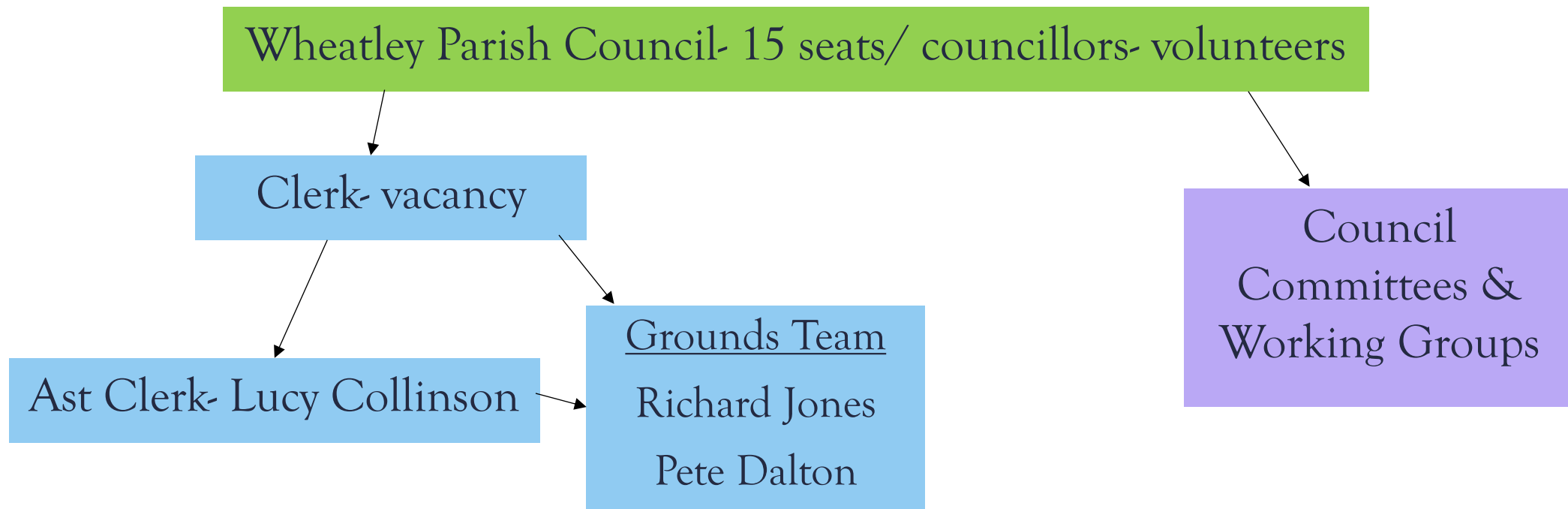
ANNUAL
MEETING
2025

- Welcome from the Chair
- To receive minutes from Annual Parish meeting 2024
- Wheatley Parish Council Report
- SODC Report
- Oxford County Council Report
- Presentation of Section 19 Report 2025
- Open Floor Q & A

ANNUAL REPORT 2024-2025



Our structure



ANNUAL REPORT 2024-2025



Supporting the Community

- Managed our play areas, open spaces- including footpaths and tree stock
- Installed new benches & a bus shelter
- Reported issues on FixMyStreet
- Awarded Grants
- Objected inappropriate planning applications
- Worked with developers to deliver appropriate development
- Assisted Oxfordshire County Council with new parking schemes

ANNUAL REPORT 2024-2025



Our income...*

• Precept	£160,963
• Newsletter & advertising	£15,885
• Developer contributions	£13,923
• Bank Interest	£9,869
• Other	£1,768

... and how it was spent*

• Staff costs	£65,229
• Open Spaces & Trees	£26,256
• Newsletter	£11,230
• Grants	£8,223
• Office, meetings & events	£7,198
• Bus Shelter	£6,231
• Other	£14,055

* Draft figures and unaudited 31.03.2025

CHAIRMAN'S REPORT

Cllr Alison Sercombe



HIGHLIGHTS

- Christmas Fair continued to be a successful event
- Local Produce Market- 2 successful events held
- Another successful Wheatley & Holton Play & Activity Day- 13th July 2024
- Review of Wheatley Neighborhood Plan to adjust and update
- Built a positive relationship with Lagan Homes (developers at Miss Tombs Field, off of London Road)



FUTURE PROJECTS AND EVENTS

- Bringing Littleworth Field into Community use
- Continued interest in obtaining a lease on the Cadet Hut for community use
- Continue to work with Wheatley Playing Field Trust to improve their facilities and support them to deliver sporting opportunity for all
- Oxfordshire Play Association Mini Play Day's- Easter, May Half Term Summer Holidays
- Wheatley Christmas Fair Friday 28th November 2025, 2pm-8pm
- Church Road rec refurbishment- designs & quotes being sought ready for community consultation



SODC REPORT

Cllr Peter Ramsdale



OXFORDSHIRE
COUNTY
COUNCIL
REPORT

Cllr Tim Bearder



**OXFORDSHIRE
COUNTY COUNCIL**



SECTION 19 FLOOD
INVESTIGATION REPORT

OPEN FLOOR Q & A

