

2023-2027

Wheatley Parish Council Strategic Plan



89a High St, Wheatley, Oxford, OX33 1XP



Contents

I. Executive Summary	3
II. The Council	4
III. Our Structure	5
IV. What We Do	6
V. Strategic Plan	7
VI. Our Budget	8
VII. Future Plans	9

Executive Summary

Summary

The role of local and parish councils are ever changing, with increasing demands on its resources to maintain and improve the lives of its community.

Wheatley Parish Council have written this strategic plan that highlights key challenges and how its plans to address them.

As the council embark on a new term, 2023-2027 councillors acknowledges that it can only achieve its objectives, by working in collaboration with existing organisations and groups from within the community and beyond.

Our Vision

To create a vibrant and strong community that supports the needs of residents, businesses and groups.

Our Values

Our values are:

1. Community & environmental focus
2. Fairness
3. Leadership
4. Openness
5. Problem Solving

The Council



Alison Sercombe

Chairman

Alison is responsible for leading 'Team Wheatley', delivering projects to enhance and develop our community. Alison spent 20+ years in public service at a senior level and her family has been in the village for many generations.



Toby Newman

Vice Chairman

Explain what they do for the business. How much experience do they have? Where did they study? What are their achievements? You may also add a fun fact about them.



Michelle Legg

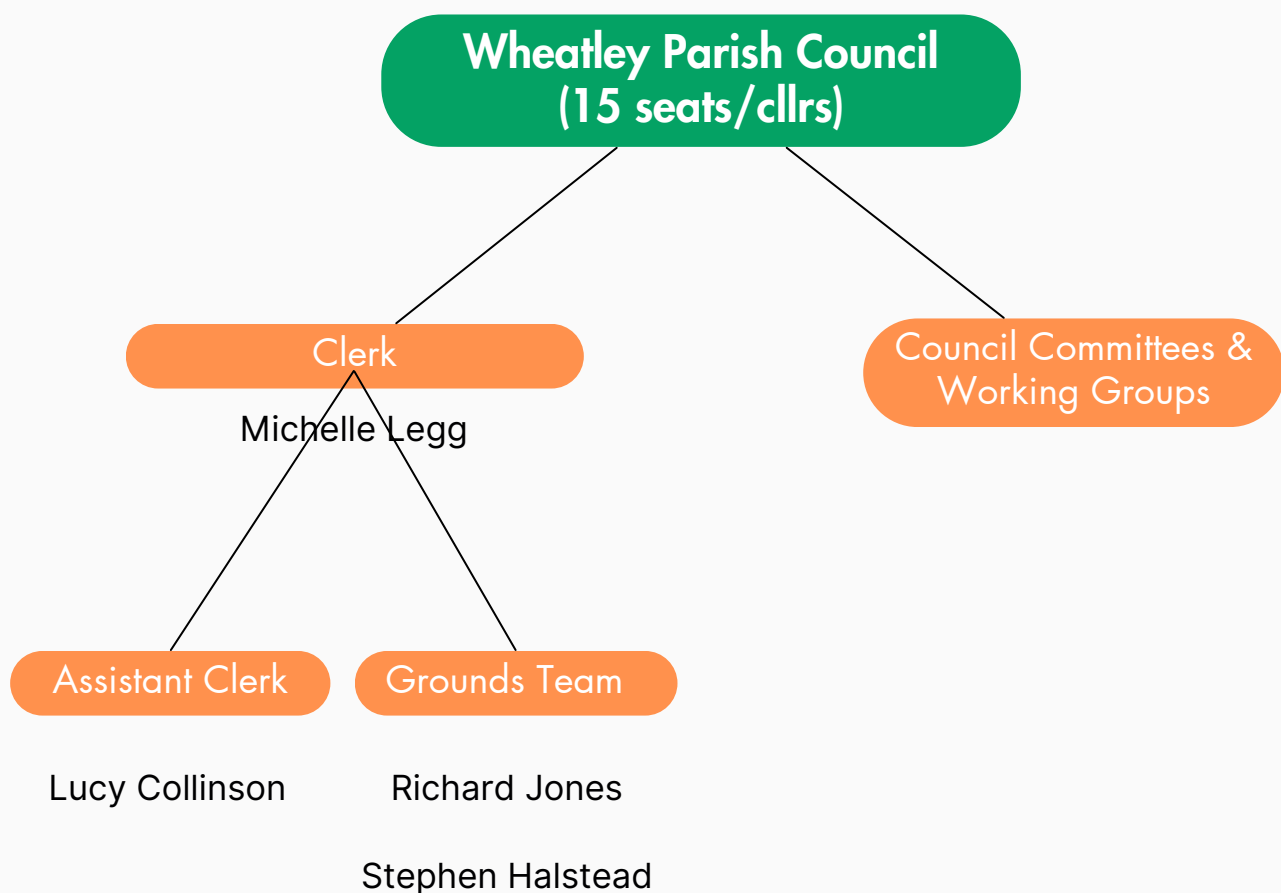
Clerk

Manages the Council's property as well as the daily running of Council administration and staff. She also provides the council with guidance and support, to assist the wider council in making decisions.

Michelle has been with the council since 2017

Our Structure

Who is who



Councillors 2023-2027

Richard Barrett, Andrew Cooper, Paul Gregory, Les Mara, Toby Newman, Peter Ramsdale, Alison Sercombe, Anthony Shepherd, Richard Street, Lizzie Tully, Paul Willmott

What we do



Our facilities & services

We own and manage :

- Church Rd Rec
- Cullum Rd Rec
- Farm Close Rd Rec
- Littleworth Allotments
- several footpaths
- Village Square (High St)
- two village greens
- numerous trees

We own Wheatley Playing Fields and lease these to Wheatley Playing Fields Trust.

We have a small parish office, at 89a High St.

We administer a community grants scheme, providing support to local organisations, or organisations that support residents of Wheatley.

Not sure who is responsible?

- Visit [Fixmystreet.org](https://fixmystreet.org) and report it
- Check out Wheatley News
- Contact the parish office

Strategic Plan

We have set out our key priorities and objects for the next four years and beyond

Our goals and objectives:

Goal 1 Action against Climate Change to protect our environment

Lead Cllr: Alison Sercombe

- Replace the existing sports pavilion with a carbon neutral building
- Identify sites to plant more shrubs and trees, particularly native species
- Develop wildflower/long grass areas along roadsides
- Scope a green route through the village
- Work with primary and secondary schools to support the delivery of projects that will improve community access and facilities

Goal 2 Support our village to become a vibrant, sustainable and safe place

Lead Cllr: Peter Ramsdale

- Actively work with OCC on better maintenance of our roads, tackling dangerous and inappropriate parking
- Investigate whether '20 is plenty' should be implemented in Wheatley
- Work with OCC on solutions for parking on High St and surrounding roads
- Write and implement a Community Emergency Plan
- Actively promote businesses in our village
- Actively source goods and services from local traders
- Support community events

Goal 3 Enhancing councillors learning and skills to ensure that the council is accessible to the community and promoting inclusivity and wellbeing

Lead Cllr Toby Newman

- Develop a Youth Council, to contribute to the development of facilities for young people
- Develop channels of communication to reach the wider community
- Continue to support wellbeing within our community
- Encourage and promote sport and recreation in Wheatley

Our Budget

Details of our budget for
2023-24

Capital Requirements

In this section, give a breakdown of the income we plan to receive and how we plan to spend this, to support the community:

	Income
Newsletter	13,590
Open Spaces	£1,685
Grants & Precept	£1,99,733
Other Income	£940
TOTAL	£215,948

	Expenditure
Staff Costs	£55,120
Utilities	£1,252
Meeting & Office Costs	£18,450
Professional Fees	£14,098
Open Spaces Maintenance & Projects	£51,080
Community & Grants	£64,235
Other Costs	£4,012
TOTAL	£215,948

Future Plans

We have some ambitious plans that we hope to deliver within the next four years

Littleworth Playing Fields

We are working with Wheatley Primary School, Oxford Diocese School Trust and Oxfordshire County Council to make a large part of Littleworth Playing Fields accessible to the community.

Wheatley Cadet Hut

We are working with the Ministry of Defence and Oxfordshire County Council to bring an under used building back into the community.

Youth Club

Working in partnership with Oxfordshire Play Association we plan to have launch Wheatley Youth Club in 2023.



Contact us for further inquiries

Wheatley Parish Council
The Parish Office,
89a High St,
Wheatley,
OX33 1XP
01865 875615
Clerk@wheatleyparishcouncil.gov.uk
www.wheatleyparishcouncil.gov.uk
Follow us on Facebook and Twitter

